

Supporting Vattenfall Sandbank project  
by leveraging the decision support & risk management system

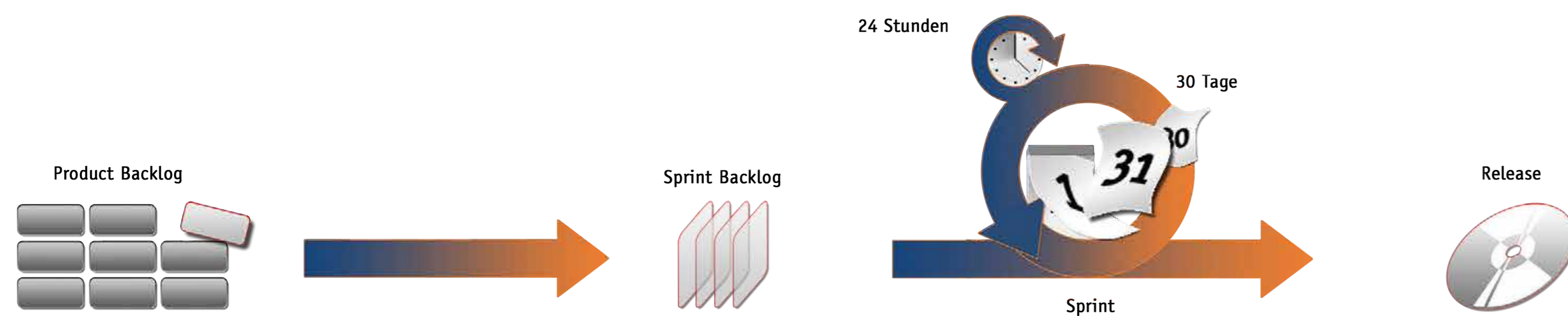
Matthias Kraaz<sup>1</sup>, Dr. Ralf Borchers<sup>1</sup>, Anne Lina Holy<sup>2</sup>

<sup>1</sup>megatel GmbH – An OHB Company - <sup>2</sup>Vattenfall Europe Windkraft GmbH

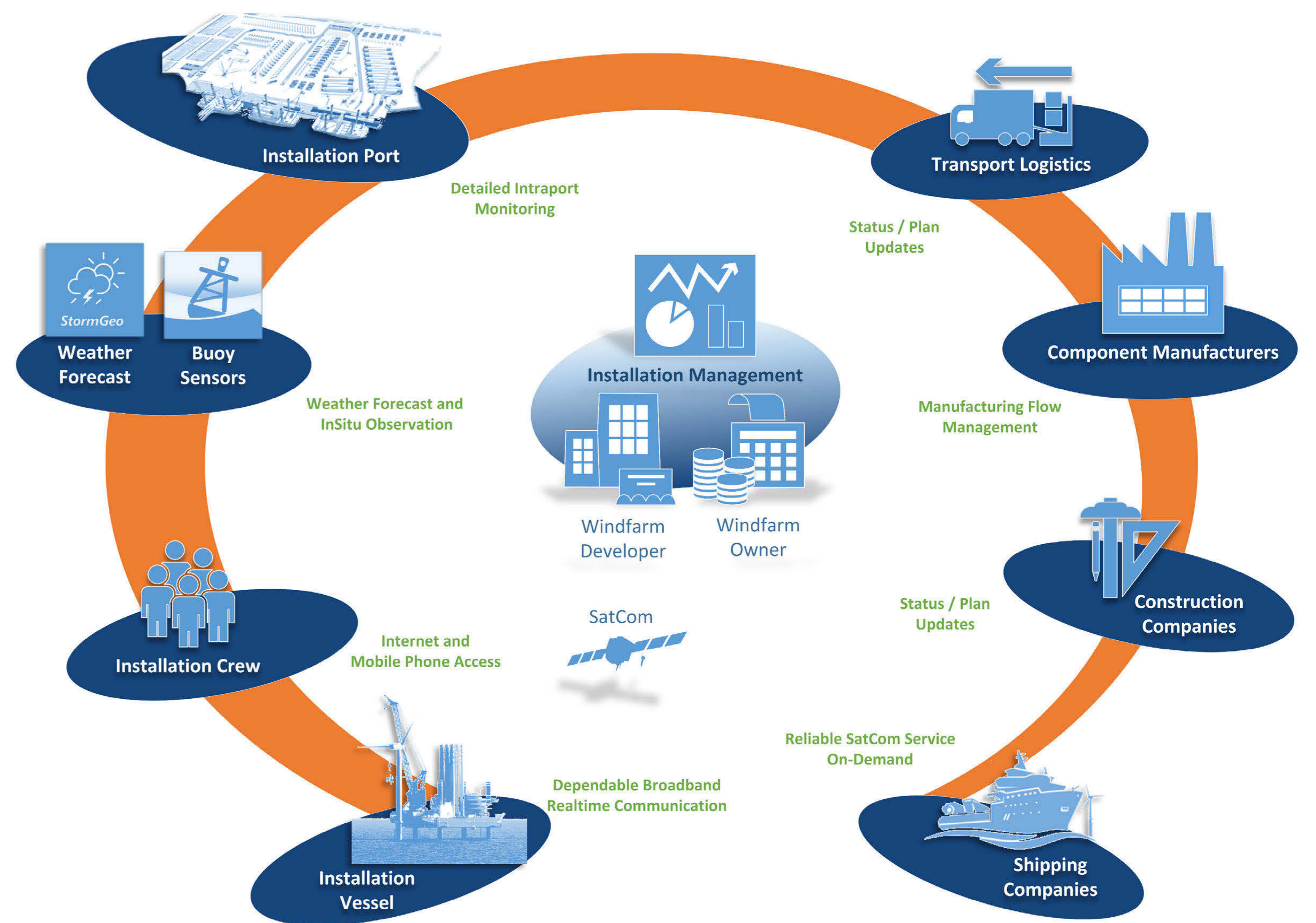


Abstract

- Lack of adequate communication infrastructure between project management office and offshore installation site often leads to insufficient information flow.
- Information bottlenecks hamper project management decisions potentially causing high financial impact on overall installation costs.
- Fusion of all relevant project information in a web-based Decision Support & Risk Management (DSRM) System enables a better overview & planning of construction processes.
- DSRM System was developed for Vattenfall in a very short time based on Agile software development methodologies.
- Agile software development methodology, reducing the time between the identification of a requirement and the delivery of the new feature to a single week.
- Full system development within a single installation project.

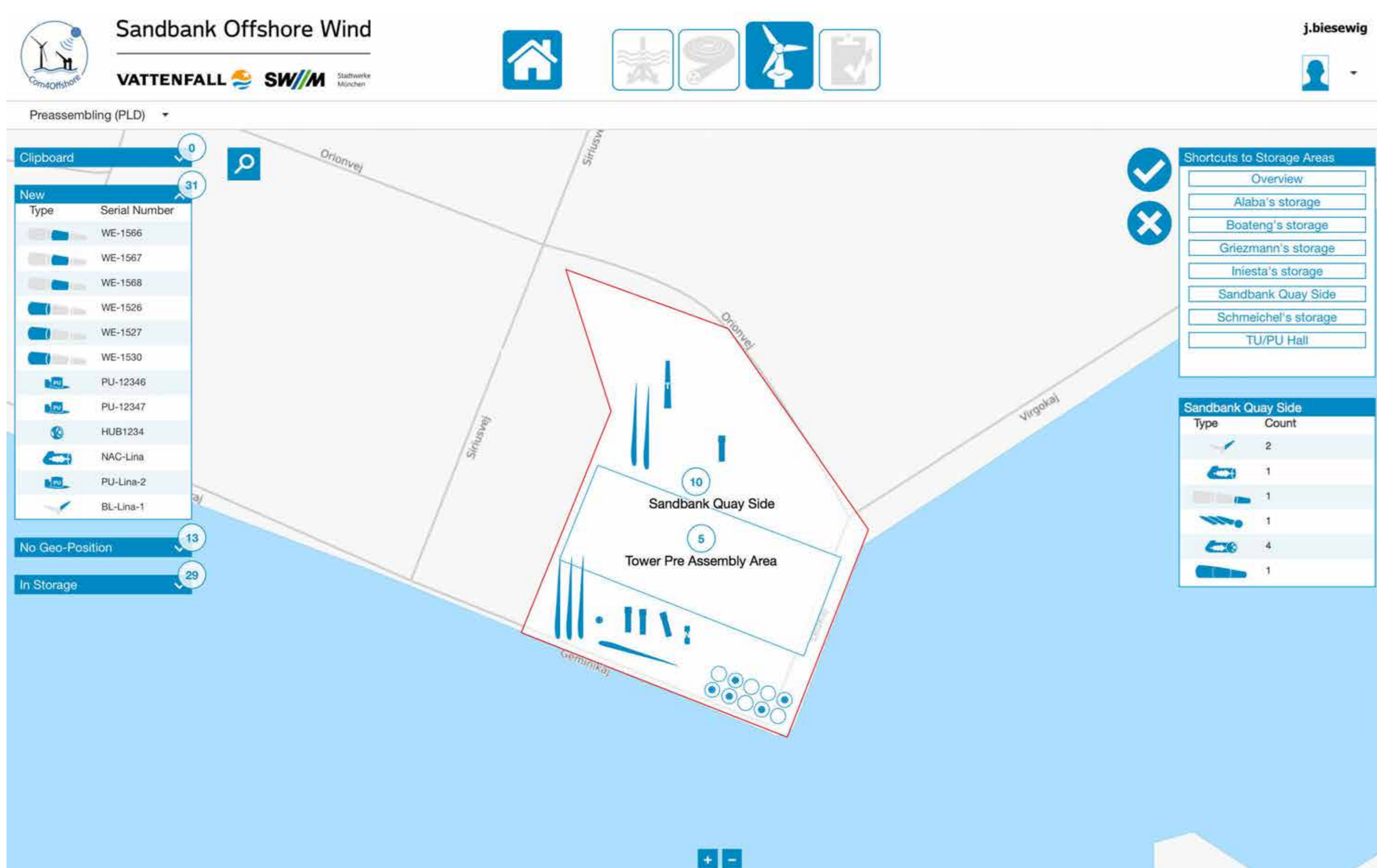


System Overview



Solution

- Integrated Service for communication, sensor devices & software applications for onshore and offshore construction activities.
- Satellite based public service supporting the communication needs of the different user groups in offshore wind farm areas – offshore becomes online.
- WiFi and 3G/4G mobile connections for mobile devices (smartphones, tablets etc.).



Benefits

- Reliable communications services adapted to users needs.
- Reduction of installation costs.
- Optimising the supply chain and construction processes.
- Complete tracking of all progresses.
- Transparency and availability of information about the supply chain.
- Near real-time information flow (both offshore and onshore).
- Graphical map-based user interface replaces whiteboards.
- Attractive Graphical User Interface and ease of use.
- Integration of third party data like weather forecast data, sensor data etc.

References

- Com4Offshore project is co-funded by the European Space Agency (ESA).
- More information: [www.com4offshore.com](http://www.com4offshore.com)

