



AMPELMANN

Press Release

Ampelmann announces the development of a new system able to safely transfer people and cargo up to 5 tons

Delft, The Netherlands

Ampelmann, the Dutch offshore access provider, has announced that it has a new full motion compensation system in the pipeline. The E5000 is the latest development brought forward by the company, with the ability to transfer personnel as well as cargo up to 5,000kg in rough waters offshore. It is expected to be operational in Q3 2020.

The system is based on the proven technology of the [E1000](#), which has been performing safe people and cargo transfers since its launch in 2016.

“Building on the success of the E1000 and the specific needs of our clients, we recognised an opportunity to design and develop a system that can transfer people and lift up to 5 tons of cargo. That significantly broadens the possibilities of the offshore lifting scope compared to existing systems,” said Diederick Nierstrasz, Ampelmann’s Offshore Wind Business Unit Manager.

The E5000, with its full motion compensation, will be able to operate in high sea states, thus enabling safe offshore access and extending the weather window of operations. The switch between people and cargo mode takes less than a minute and just one push of a button. This plug-and-play system turns any vessel into an all-round offshore tool and as a result, clients benefit from shorter campaign durations, increased logistical efficiency and a broader scope of work, for instance lifting fully fuelled generators to wind turbines or support blade repair projects.

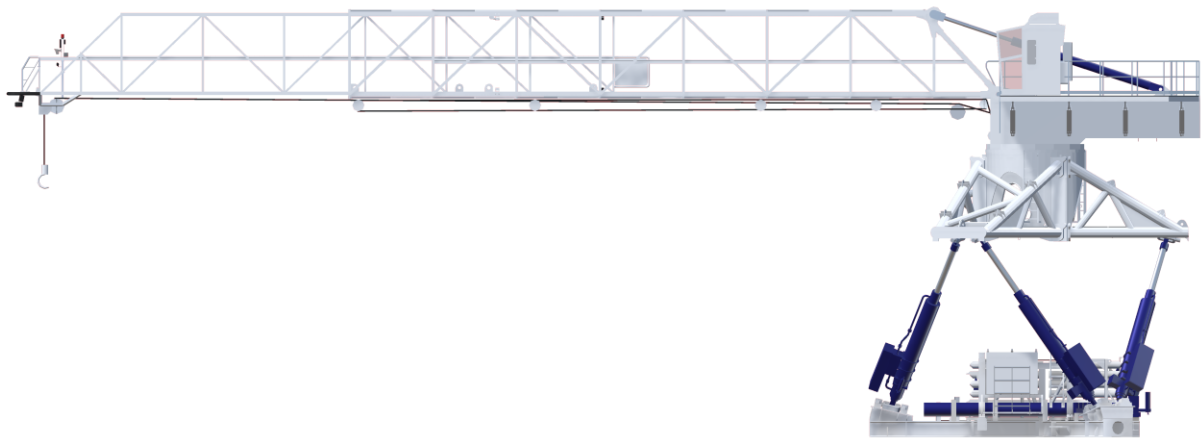
As with any other Ampelmann system, this one, too, will be complemented by the company’s full service package, including trained and certified operators, project preparation and execution, maintenance services and 24/7 support from the [Operations Control Centre \(OCC\)](#).

“With the E1000, we launched a unique system on the market,” Nierstrasz added. “As the market recognised its potential, clients requested more lifting capacity and we believe the E5000 can offer a compelling package for them to get the most out of their offshore campaigns.”

Ampelmann will be exhibiting at [WindEurope Offshore](#) on 26-28 November. You can visit the company in Hall C, C3-C1 in the Bella Center, Copenhagen, Denmark.

ENDS

Images



The E5000 system, with its full motion compensation, will be able to transfer people and up to 5 tons of cargo in rough waters.



Ampelmann Operations B.V.
Oostsingel 209, 2612 HL Delft, The Netherlands
+31 (0)20 240 0121 | info@ampelmann.nl | www.ampelmann.nl
VAT NL820605876B01 | COC 27340502

Note to editor

Ampelmann designs and delivers innovative, safe, reliable and efficient transfer solutions to the offshore energy industries globally. With a track record of more than 5.8 million safe people transfers, over 12 million kg cargo transfers and 350 projects worldwide, Ampelmann operates in Europe, Africa, Asia Pacific, the Americas and the Middle East.

Ampelmann currently maintains a fleet of 60 operational systems used for transferring crews and cargo to offshore structures. Its solutions are tailored to the needs of different market segments, sea states, cargo and crew loads, and are used by the key players in the global industry.

Issued on behalf of Ampelmann by Big Partnership. For further details please contact Gillian George on +44 (0)1224 211045 or gillian.george@bigpartnership.co.uk.

