

For information on how high you can build your stand / hang banners, please refer to the technical floor plan specific to the event. Build height limits will depend on the exact location of your stand. The ceiling heights is not the only information that has been taken under consideration, when limits were established.

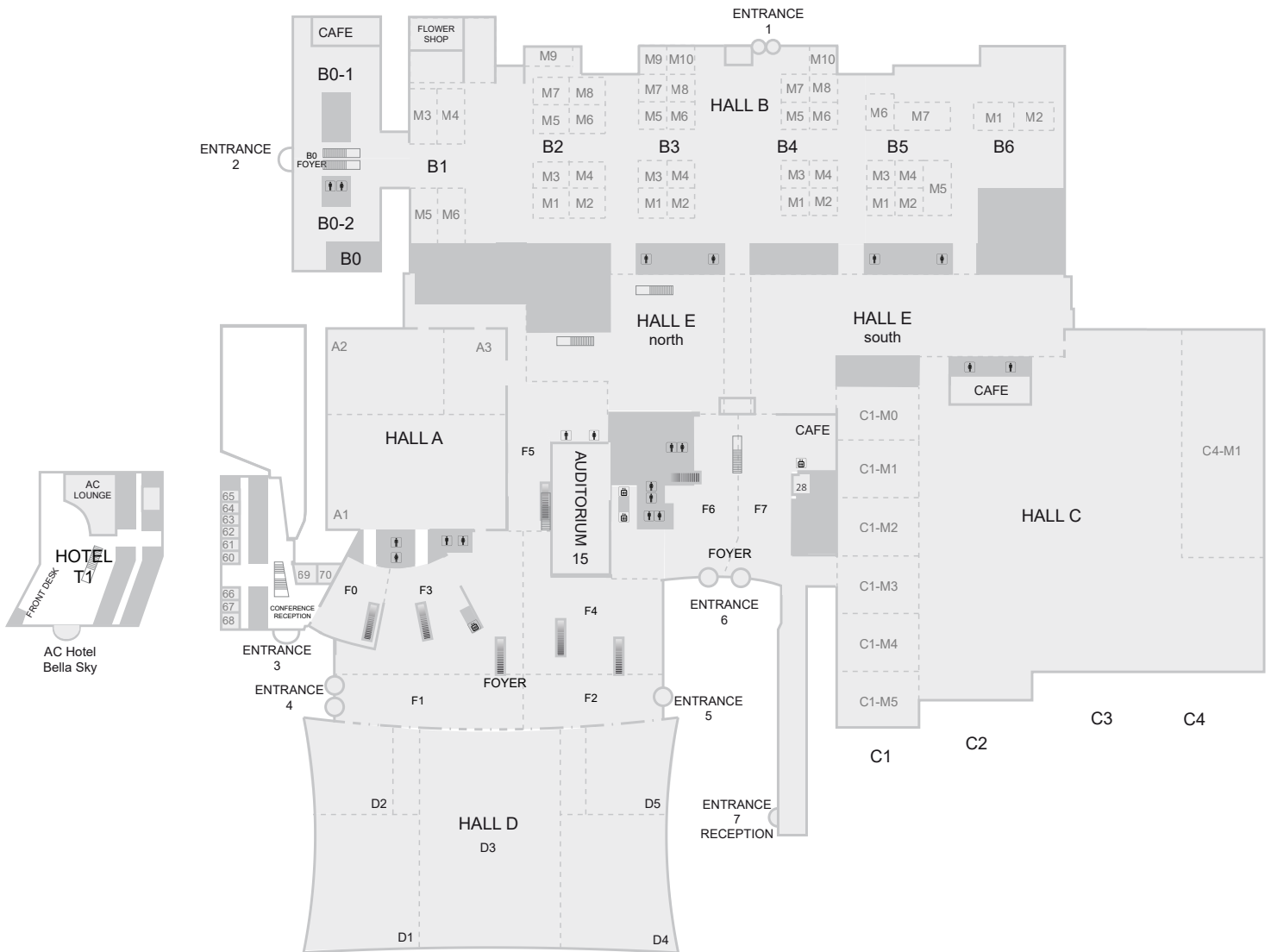
# TEKNISK INFO

## *TECHNICAL INFO*

# BELLA CENTER stue plan

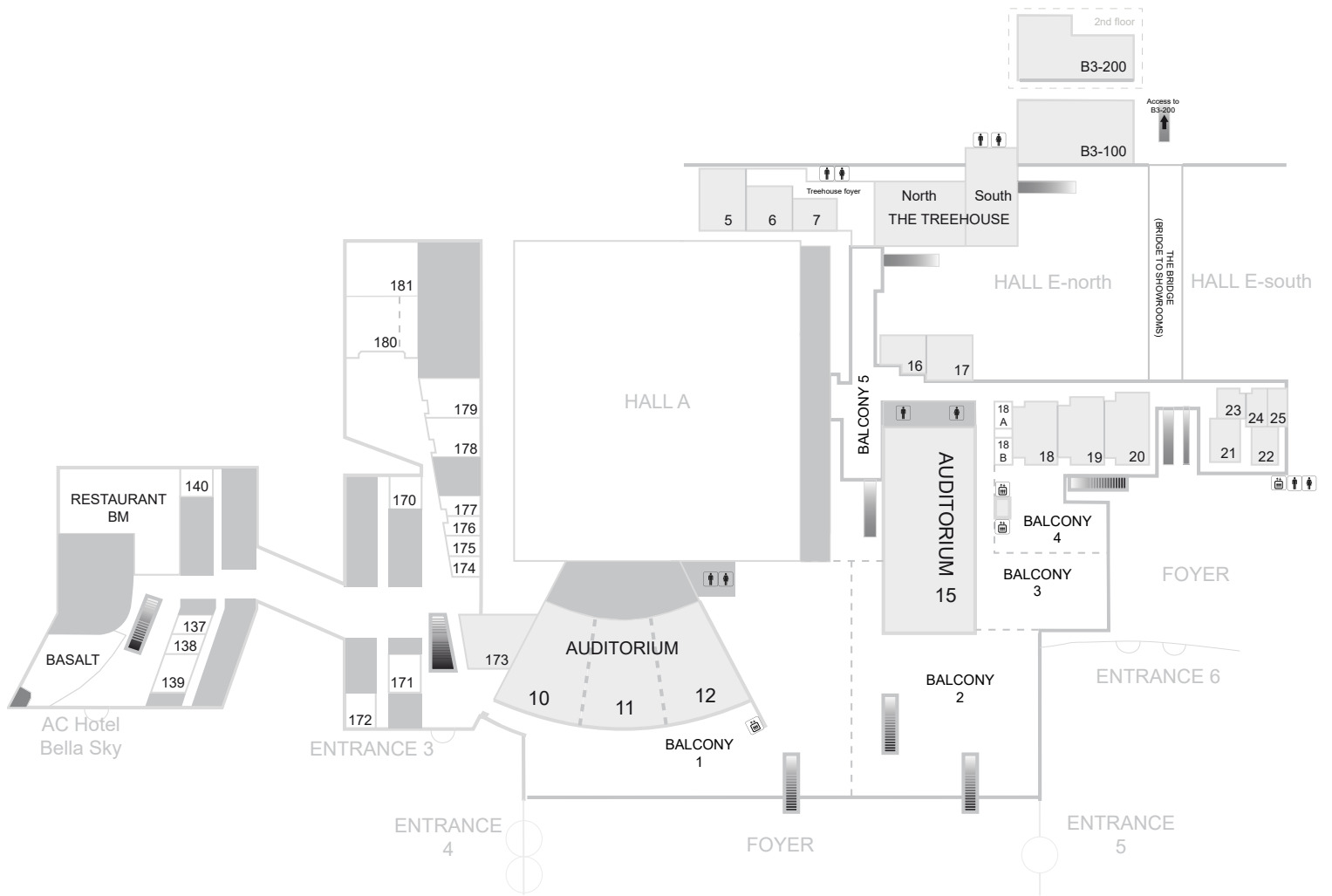
## Bella Center Ground plan

METRO



# BELLA CENTER 1. sal

Bella Center 1<sup>st</sup> Floor



## Indholdsfortegnelse

På de følgende sider finder du nyttige informationer om vores udstillingshaller. Reglerne er lavet for at sikre, at alle udstillere kan få optimale forhold under et arrangement, hvorfor vi beder dig læse dem grundigt. Har du yderligere spørgsmål, er du velkommen til at kontakte Bella Center.

Bella Center oversigt
Indholdsfortegnelse
Hal A
Hal B
Hal C
Hal D
Hal E
Foyer (F0-F7)
Balcony (1-5)
Outdoor area - Entrance 3-6

## Content

*On the following pages, you will find detailed information on our exhibition halls. The rules have been made to help ensure optimum conditions for all exhibitors during an event. Please read them carefully. If you have additional questions, please contact Bella Center.*

<i>Bella Center overview</i>	<a href="#">2</a>
<i>Content</i>	<a href="#">4</a>
<i>Hall A</i>	<a href="#">5</a>
<i>Hall B</i>	<a href="#">8</a>
<i>Hall C</i>	<a href="#">11</a>
<i>Hall D</i>	<a href="#">16</a>
<i>Hall E</i>	<a href="#">21</a>
<i>Foyer (F0-F7)</i>	<a href="#">24</a>
<i>Balcony (1-5)</i>	<a href="#">32</a>
<i>Outdoor area Entrance 3-6</i>	<a href="#">38</a>



# Kongressal A

## – en kort beskrivelse

## Congress Hall A – a brief description

### Adgang til hallen

På tegningen kan du se numrene for de enkelte porte, der giver adgang til hallen.

### Accessing the hall

Please refer to the floorplan where access points are indicated.

### Hallens frihøjde

Hallens frihøjde er variabel op til 8,90m målt fra underkanten af loftets lys sætning.

### Ceiling height

Ceiling heights vary up to 8.90m, measured from the under edge of the ceiling flood lighting.

### Belysning

I hallens loftflåder hænger der lysarmaturer med 3x14W til den generelle belysning. De har 3 set punkter 33% - 66% og 100%. Desuden er der i loftflåder, monteret halogen belysning, 36 stk. I hver flåde på hver 35W. De har 3 set punkter 25% - 50% og 100%.

Der er mulighed for at slukke flåderne individuelt. Flådehøjden er variabel fra 3,5m til 8,9m målt fra underkanten af loftets lys sætning.

### General lighting

In the ceiling fleets of the hall hang light fixtures with 3x14W for the general lighting. They have 3 set points 33% - 66% and 100%. In addition, in ceiling fleets, halogen lighting, there are 36 pieces in each fleet of 35W each. They have 3 set points 25% - 50% and 100%.

There is an option to turn off the fleets individually. The fleet height is variable from 3.5m to 8.9m measured from the lower edge of the ceiling lighting.

### Loft/Ophængning i loft

Installation af el, vvs, netværk og trykluft trækkes fra loftet.

### Ceiling/ suspension in the ceiling

Power, plumbing, network as well as compressed air will be supplied from the ceiling.

**Wirer:** De fleste steder i hallen kan der monteres wirer med en vægt fra 0-99 kg. Wirer med en vægt over 99 kg kræver speciel godkendelse. Kontakt venligst din koordinator i Bella Center for beregninger samt godkendelse. Bella Center forbeholder sig ret til evt. at tilpasse placering.

**Drop wires:** Most places in the hall we can mount drop wires with a weight up to 99 kg. Drop wires exceeding 99 kg will require a special approval. Please contact your coordinator at Bella Center for calculations and approval. Bella Center reserves the right to to customize location.

**Taljepunkter og rigning:** Der kan rigges i spær. Der arbejdes med variable vægt, ift. loftets totalbelastning. Detailtegningen indeholder information om spær eller riggepunkt-ernes placering.

Hvis I har behov for ophæng i en position mellem to riggepunkter, kan det opnås med enten bridling eller ved at hænge et rig-stykke.

Per riggepunkt kan der som udgangspunkt maksimalt hænges 500 kg.

Har I brug for rigning, at bridle eller opsætte rig-stykke, bedes I kontakte jeres kontaktperson for muligheder, validering og tilbud.

**Hoist and rigging:** It is possible to use the truss for rigging. We are working with variable weight, depending on other loads in the ceiling.

The detail drawings for stands will include information on the location of the beams or rigging points.

If you need suspension in a position between two rigging points, this can be achieved by either bridling or by hanging a rig-piece. In general a maximum of 500 kg can be hung per rigging point.

If you need rigging, bridling or to hang a rig-piece, please contact your contact at Bella Center for options, validation and offers.

Bella Center forbeholder sig ret til evt. at tilpasse placering.

Bella Center reserves the right to to customize location.

### Gulv

Gulvet er dækket af mørkeblåt gulvtæppe med mønster.

Gulvet kan klare følgende belastninger:

Punktbelastning fordelt på 15x15cm = 4000 kg.

### Floor

The floor is covered with dark blue carpet with pattern.

The floor can carry the following loads:

Single-point load per 15x15cm = 4,000 kg.

Kørsel i områderne med udendørskøretøjer kræver speciel godkendelse.

Outdoor vehicles in the area will require a special approval.

### Vægge

Dækket af stofgardin fra loft til gulv.

Brandskab, L75xB25xH85cm – må ikke tildækkes.

### Walls

Covered by fabric curtain from ceiling to floor.

Fire hose reel cabinets, L75xW25xH85cm – must not be concealed.

### Luft

Hallen har luftkonditioneret ventilation.

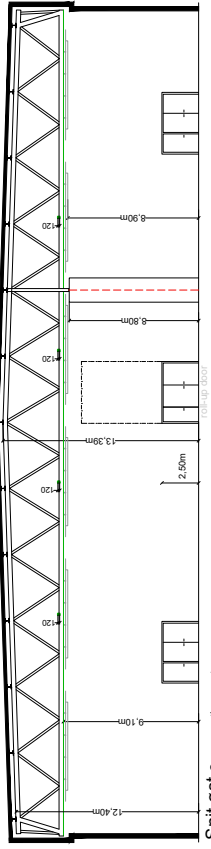
### Air

The hall has air conditioned ventilation.

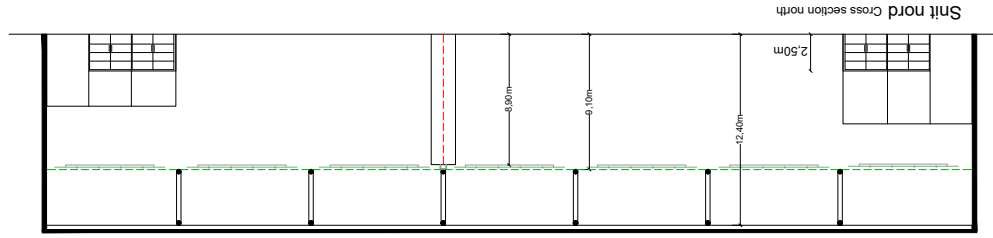
# HAL A

## Hall A

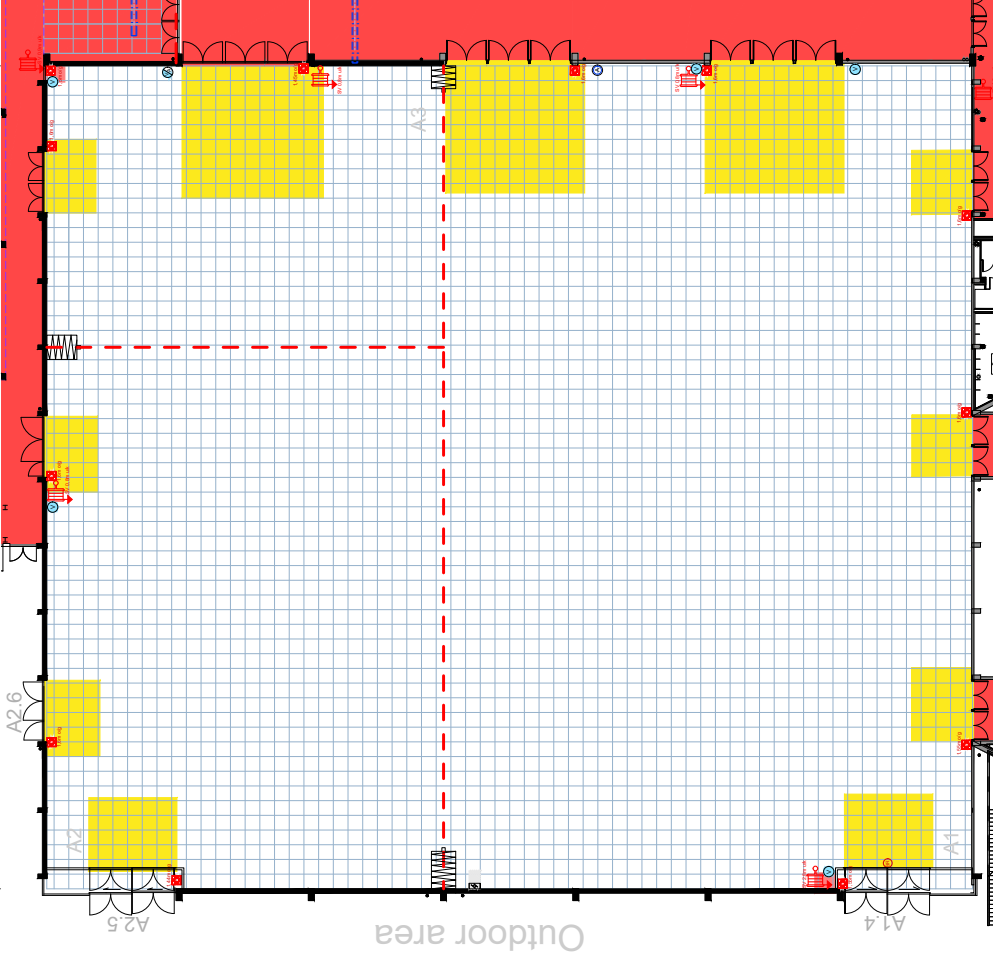
SCALE 1:500 - FORMAT A4



Snit øst Cross section east

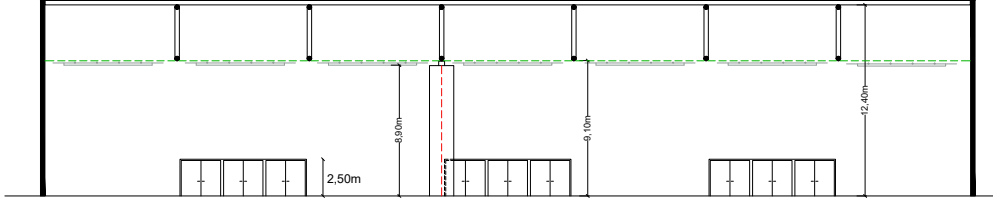


Snit nord Cross section north

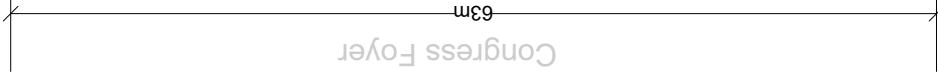


Outdoor area

Auditorium Foyer



Snit syd Cross section south



Congress Foyer

### DETAILS Gulv/Floor

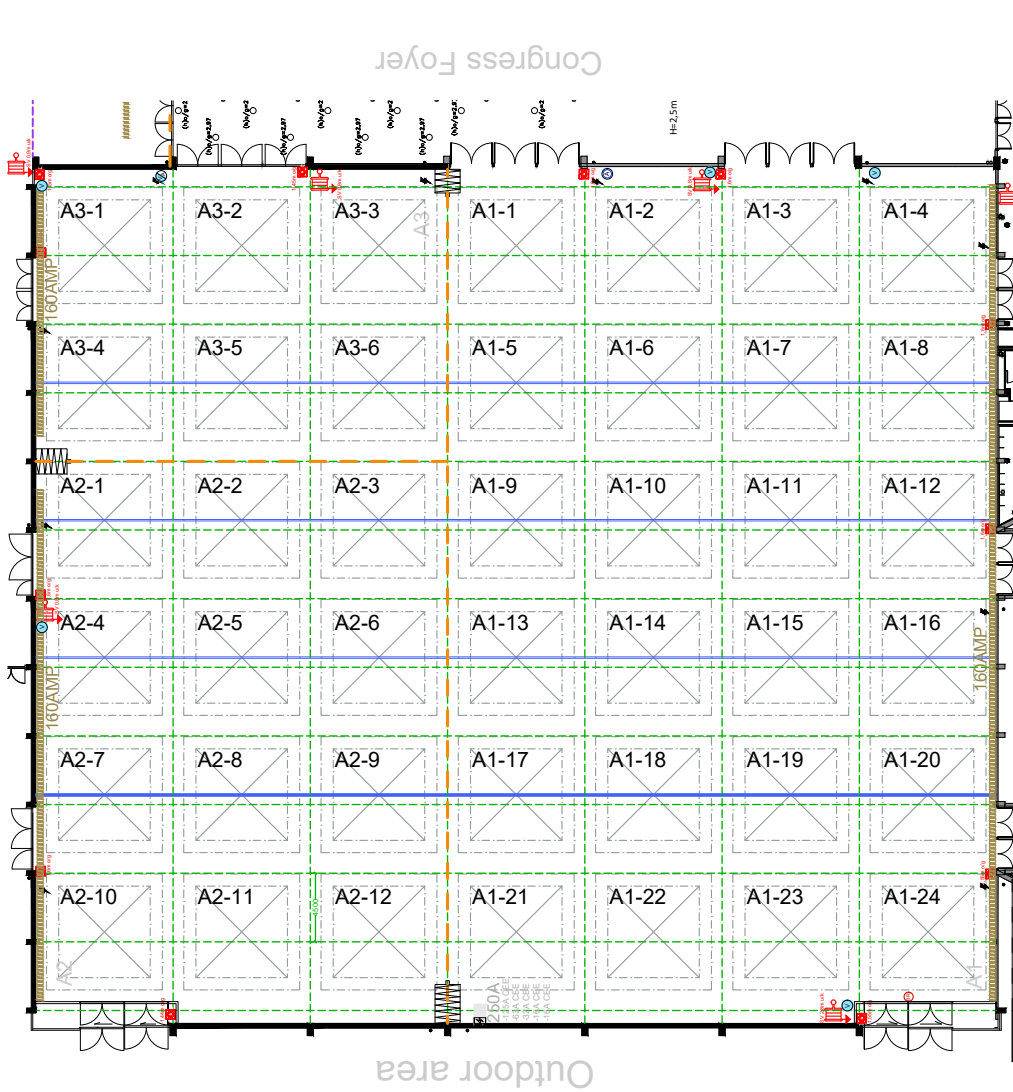
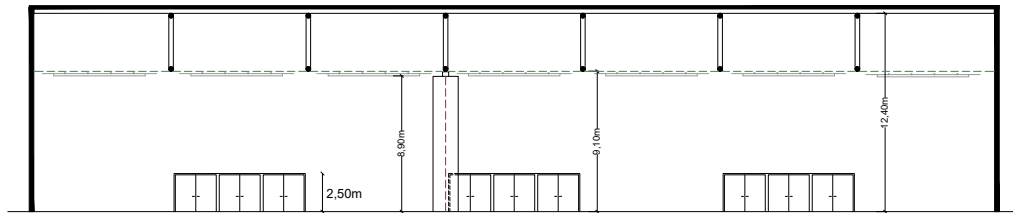
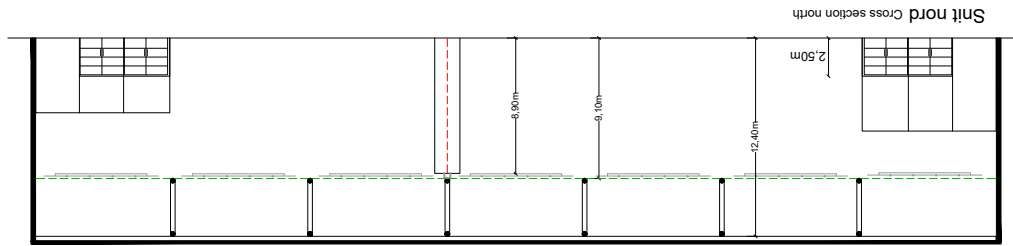
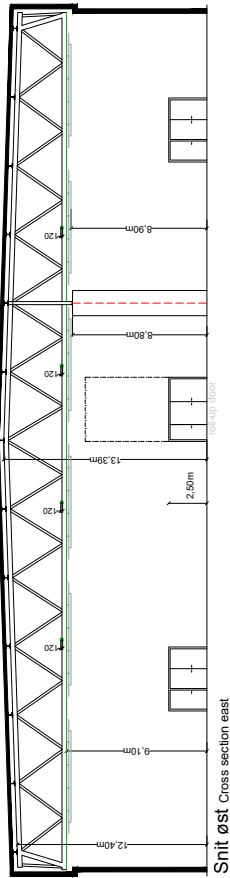
- 1x1m GRID
- BRANDTRYK Fire-alarm
- SLANGEVINDER Fire-hose reel
- FOLDEVÆG Movable Wall
- VAND Water
- AFLØB Drainage
- VAND & AFLØB Water & Drainage

Brand Restriktions Zone - Gul - Gulvplade for brandtryk  
 Event Design skal indlægges for vurdering i disse områder.  
 Fire Restriktions Zone - Yellow - Gulvplade for brandtryk  
 Event Design skal indlægges for vurdering i disse områder.  
 Brand Restriktion Zone - Red - Gulvplade for brandtryk  
 Ingen indtægter tilladt, der kan dog være enkelte undtagelser og dispensationer.  
 No built up permitted, however there may be individual exceptions and dispensations. Contact the Security Department for any dispensations.

# HAL A

## Hall A

SCALE 1:500 - FORMAT A4



### DETAILS Loft/Ceiling

BRANDTRYK  
Fire-alarm

SLANGEVINDER  
Fire-hose reel

SPÆR TIL RIGGING  
Roof beam for rigging

SPÆR - IKKE TIL OVERBELASTNING  
Roof Non load beam

FOLDEVÆG  
Movable Wall



LOFTFLÅDE, 3x3m  
Ceiling fleet 3x3m

# Hal B

## – en kort beskrivelse

### Adgang til hallen

På tegningen kan du se numrene for de enkelte døre, der giver adgang til hallen. Større gods skal leveres via port B5-8.

### Hallens frihøjder

Frihøjderne i hal B er: 3m / 3,35m.

Se haltegningen på side 9-10.

### Belysning

I B0 - B2 hænger der lysskinner med 27W LED spots. De er sat op med 2m afstand, i 9 rækker gennem hvert skib. Fungere også som grundbelysning.

Grundbelysning er lysarmaturer i B3-B6 med 3x14W 1 stk. pr. 9m<sup>2</sup>. I B3 - B6 er der monteret lysskinner med 8,5W LED spots, 6 stk. pr. 9m<sup>2</sup>.

Spot belysning er fastmonteret og må kun justeres af Bella Center personale.

Mellemgang mellem Hal B og Hal E, er udstyret med kompakt rør 26W/830, indbygget i nedsænket loft, og tændes sammen med grundbelysning.

Mobile møderum, slukkes udstiller lys, hvis der er lærred og projektor. Dette udføres af elektriker.

### Loft/Ophæng i loft

Installation af el, VVS og netværk mv. sker fra loftet.

I hal B0-B2 skal al rigning ske fra de fastmonterede øskner i loftet. Den maksimale belastning af øsknerne er 49kg pr. punkt. Detailtegningen indeholder information om riggepunkternes placering.

I hal B3-B6 er der ophængt et kabelbakkesystem, opdelt i 3x3m moduler. Kabelbakkesystemet er delt i 2 højder på henholdsvis 3,0m og 3,35m over gulv. Den maksimale belastning af kabelbakkeloftet er på 25 kg/m<sup>2</sup>. Vægskinnesystemet er ophængt 320cm over gulv. Max kg for wire;

B0, B1 og B2 49 kg

B3-B5 99 kg

### Gulv

I hal B0-B2 er gulvet et flydespartlet gulv.

I hal B3-B6 er gulvet lys gråmalet beton.

Gulvet kan klare følgende belastninger:

Hjultryk (tvillingehjul)	5.500 kg/m <sup>2</sup>
Punktbelastning fordelt på 15x15cm	4.000
Max belastning (lastbil inkl. læs)	4.000 kg/m <sup>2</sup>

### Søjler

I hal B0 er søjlerne midt i hallen runde med en diameter af 55cm og ved ydervægge er søjler 45x45cm.

I hal B1-B6 er betonsøjlerne 50x50cm, mens de ved ydervæggene er 25x50cm.

Brandskabe og slangevinder – må ikke tildækkes.

### Luft

Hal B har aircondition.

## Hall B – a brief description

### Accessing the hall

On the floor plan you will find the numbers of each gate entrance to the hall. Larger goods must be delivered through gate B5-8.

### Ceiling heights

Hall B has two ceiling heights: 3m / 3.35m.

Please see the floor plan on page 9-10.

### Lighting

In B0 - B2 there are light rails with 27W LED spots. They are set up 2m apart, in 9 rows through each ship. Also serve as basic lighting.

Basic lighting is light fixtures in B3-B6 with 3x14W 1 pc. per 9m<sup>2</sup>. In B3 - B6, light rails with 8,5W LED spots are installed, 6 pcs. per. 9m<sup>2</sup>.

Spot lighting is fixed and may only be adjusted by Bella Center staff.

The aisle between Hall B and Hall E, is equipped with compact tube 26W/830, built into sunken ceiling, and turns on together with basic lighting.

Mobile meeting rooms, turn off exhibitor lights if there is canvas and projector. This is carried out by the electrician.

### Ceiling/suspension in the ceiling

Power, plumbing, network etc. will be supplied from the ceiling.

In hall B0-B2 all rigging must be made from the existing eyebolts in the ceiling. The maximum load on each eyebolt is 49 kg.

The detail drawings for stands will include information on the location of the rigging points.

Hall B3-B6 is fitted with a modular cable tray grid, each module measuring 3x3m. The grid is mounted in two heights: 3,0m and 3,35m as specified above.

Max load for wires;

B0, B1 & B2 49 kg

B3-B5 99 kg

### Floor

In hall B0-B2 the floor is a mottled design floor.

In hall B3-B6 the floor is painted concrete in a light grey colour.

The floor can carry the following loads:

Axle loads (twin wheels)	5,500 kg per sq.m.
Single point loads per 15x15cm	4,000 kg
Max load (load incl. weight of truck)	4,000 kg per sq.m.

### Pillars

In hall B0 the center pillars have a diameter of 55cm and against outer walls the pillars measure 45x45cm.

In hall B1-B6 the concrete pillars measure 50x50cm, whilst they measure 25x50cm along outer walls.

Fire hose reel – must not be concealed.

### Air

Hall B has air conditioning.

# Hall B

SCALE 1:1000 - FORMAT A4

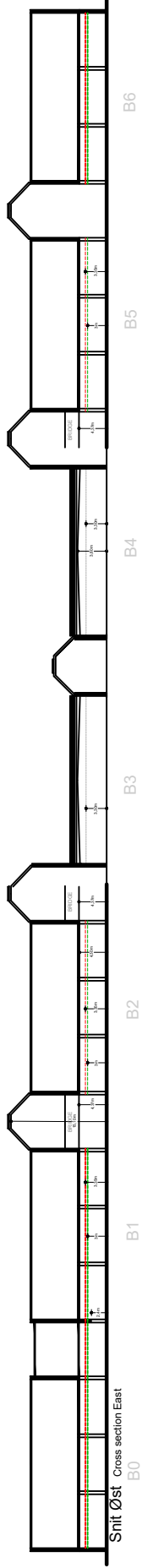


- DETAILS Gull/Floor**
- 1x1m GRID
  - BRANDTRYK Fire-alarm
  - SLANGEVINDER Fire-hose reel
  - SØJLE 50x50CM Pillar 50x50cm
  - SØJLE Ø55CM Pillar Ø55cm
  - HALLENS FRIHØJDE Ceiling heights





**Brand Restrictions Zone - Gull** - Special terms, limitations or restrictions for building event design shall not apply for planning for fire safety. Event Design shall not apply for planning of fire safety. **Fire Restrictions Zone - Yellow** - Special terms, limitations or restrictions for building event design must be involved in the assessment of built up in these areas. **Brand Restrictions Zone - Red** - Special terms, limitations or restrictions for building event design must be involved in the assessment of built up in these areas. **Fire Restrictions Zone - Red** - Special terms, limitations or restrictions for building event design must be involved in the assessment of built up in these areas. No build up permitted, however there may be individual exceptions and dispensations. Contact the Security Department for any dispensations.

# HAL B Hall B

SCALE 1:1000 - FORMAT A4



## DETAILS Loft/Ceiling

-  BRANDTRYK  
Fire-alarm
-  SLANGEVINDER  
Fire-hose reel
-  SØJLE 50x50CM  
Pillar 50x50cm
-  SØJLE Ø55CM  
Pillar Ø55cm
-  LYSRIG MED SPOTS  
Lighting truss with spots
-  LYSARMATUR 3x14W  
Light fixture 3x14W
-  RIGGE PUNKT  
Rigging point
-  STRØMSKINNE  
Power rail



# Hal C

## – en kort beskrivelse

### Adgang til hallen

På tegningen kan du se numrene for de enkelte porte, der giver adgang til hallen.

### Hallens frihøjder

Hver af hallens fire sektioner har sin egen frihøjde, målt fra gulv til underkant lamper:

C1: 4,30m, C2: 5,85m, C3: 6,85m, C4: 6,85m. Se side 12-14.

### Belysning

Grundbelysning består af LED armaturer, farve 4000 kelvin. Lys niveau er 800 lux 0,85 over gulv. Lys niveau bestilles og sættes fra central hold. Typisk lys niveau ved udstilling er 85%.

Hallen er udstyret med rig-konstruktioner med 150W CDM spot, farve 5000 kelvin, som skal tilkøbes jævnfør tilbud. Der er ingen rig i lysarkader.

### Loft/Ophængning i loft

Netværk trækkes fra loftet.

Wirer: Grundlæggende kan der ophænges 1 wire pr. 3 meter med en maks. belastning på 99 kg.

Det er muligt at lave andre vægtberegninger / -fordelinger. Detailtegningen indeholder information om spær eller riggepunkt-ternes placering.

Kontakt venligst din koordinator i Bella Center for beregninger samt godkendelse

Bella Center forbeholder sig ret til evt. at tilpasse placering.

Taljepunkter og rigning:

Der kan rigges i spær. Der arbejdes med variable vægt, ift. loftets totalbelastning.

Hvis man har behov for ophæng i en position mellem to riggepunkter, kan det opnås med enten bridling eller ved at hænge et rig-stykke. Per riggepunkt kan der som udgangspunkt maksimalt hænges 200kg.

Se Rig info på side 14.

Har du brug for rigning, at bridle eller opsætte rig-stykke, bedes du kontakte din koordinator i Bella Center for muligheder, validering og tilbud.

Bella Center forbeholder sig ret til evt. at tilpasse placering.

### Gulv

Gulvet er gråmalet beton (farvekode Ral 7038). Installation af el, netværk, VVS og trykluft sker via kanaler i hallens betongulv. Kanalernes indbyrdes afstand er 6 m.

Gulvet kan klare følgende belastninger:

Hjultryk (tvillingehjul)	5.500 kg/m <sup>2</sup>
Punktbelastning fordelt på 15x15cm	4.000 kg
Max belastning (lastbil inkl. læs)	4.000 kg/m <sup>2</sup>

### Søjler

De fritstående søjler i hallen er 40x80cm og placeret for hver 9 meter. Søjlerne i ydervæggene er 35x40cm.

Brandskab og slangevinder – må ikke tildækkes.

### Luft

Hal C har aircondition.

## Hall C – a brief description

### Accessing the hall

Please refer to the floorplan where access points are indicated.

### Ceiling heights

Each of the four sections in hall C has its own ceiling height, measured from the floor to the lower edge of the lighting truss:

C1: 4.30m, C2: 5.85m, C3: 6.85m, C4: 6.85m.

Please see page 12-14.

### General lighting

Basic lighting consists of LED luminaires, color 4000 kelvin.

Light level is 800 lux 0.85 above floor. Light level is ordered and set from central team. Typical light level at exhibition is 85%.

The hall is equipped with rig constructions with 150W CDM spot, color 5000 kelvin, which must be purchased according to offers. There is no rich in light arcades.

### Ceiling/suspension in the ceiling

Network cables will be supplied from the ceiling.

Drop wires: Most places in the hall we can mount drop wires with a weight up to 99 kg. Drop wires exceeding 50kg will require a special approval.

The detail drawings for stands will include information on the location of the beams or rigging points.

Please contact your coordinator at Bella Center for calculations and approval.

Bella Center reserves the right to adjust placement.

Hoist and rigging:

It is possible to use the truss for rigging. We are working with variable weight, depending on other loads in the ceiling..

If you need suspension in a position between two rigging points, this can be achieved by either bridling or by hanging a rig-piece. In general a maximum of 200 kg can be hung per rigging point. Please see Rig Info on page 14.

If you need rigging, bridling or to hang a rig-piece, please contact your coordinator at Bella Center for options, validation and offers.

Bella Center reserves the right to adjust placement.

### Floor

The floor is concrete, painted light grey (color code Ral 7038).

Power, plumbing, network and compressed air will, if possible, be supplied via the subfloor services ducts which are build-in the floor at 6 m intervals.

The floor can carry the following loads:

Wheel loads (twin wheels)	5,500 kg per sq.m.
Single point loads per 15x15cm	4,000 kg
Max loads (load incl. weight of truck)	4,000 kg per sq.m

### Pillars

40x80cm freestanding concrete pillars line the arcade sections running east/west at intervals of 9m.

Pillars let into the outer walls measure 35x40cm wide.

Fire hose reel – must not be concealed.

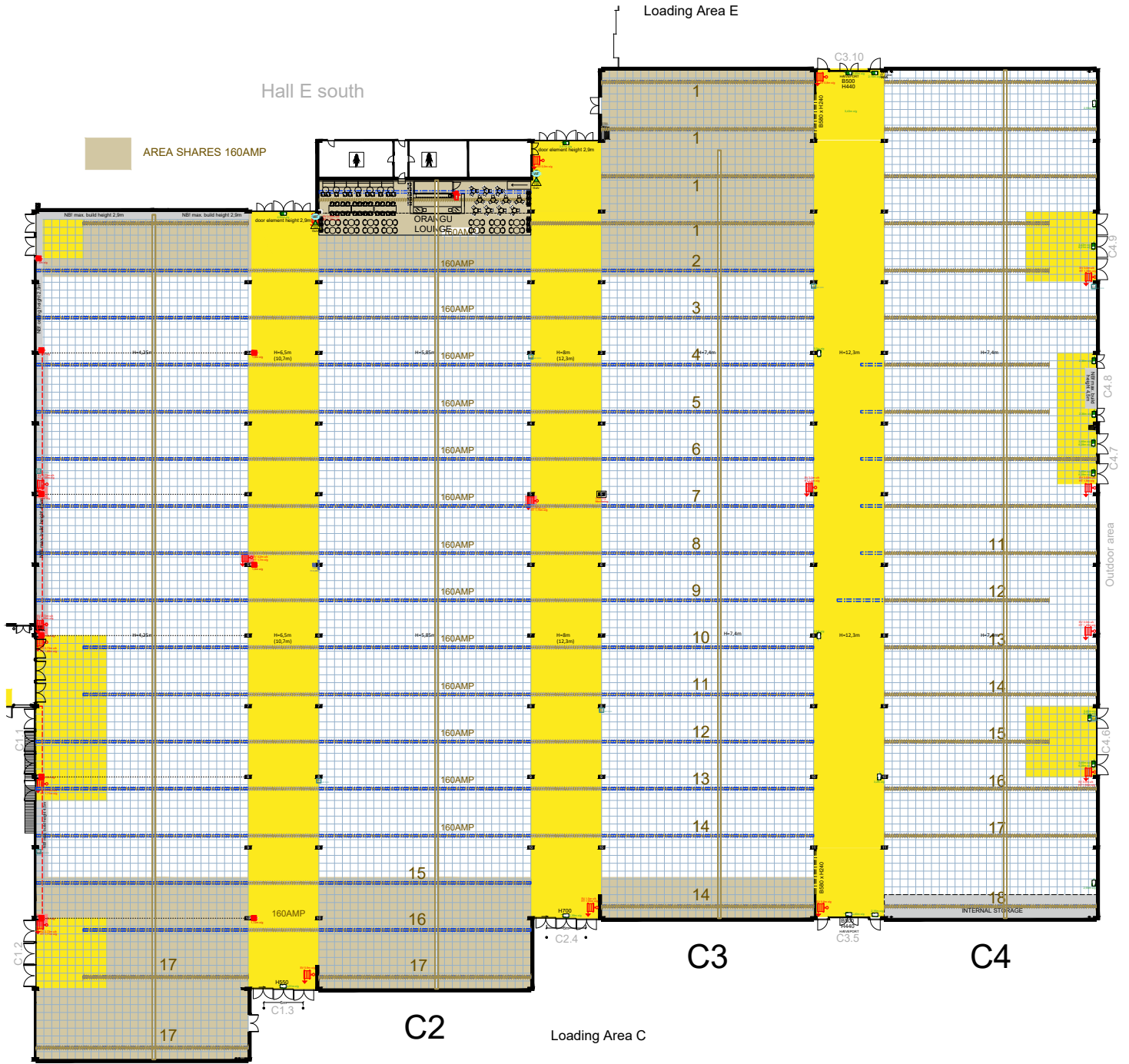
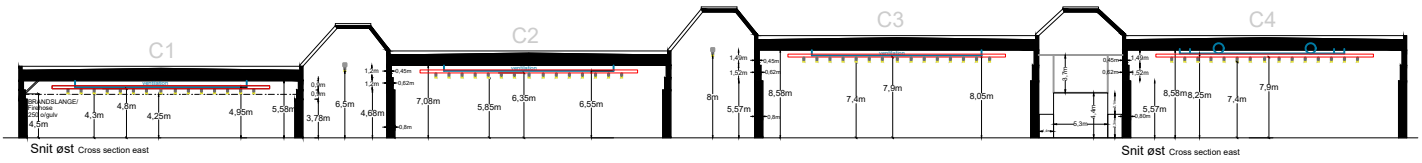
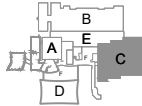
### Air

Hall C has air conditioning.

**BELLA ·**  
**CENTER**  
COPEN  
HAGEN

# HAL C Hall C

SCALE 1:750 - FORMAT A4



C1

## DETAILS Gulv/Floor

- 1x1m GRID
- BRANDTRYK Fire-alarm
- ELSKAB Power cabinet
- IT RACK IT cabinet
- Kamera Cameras
- SØJLE 40x80CM Pillar 40x80cm
- SLANGEVINDER Fire-hose reel
- KABELGRAV Cable duct
- STRØMSKINNE Power rail

**Brand Restriktions Zone: - Gul -**  
Særlige vilkår, begrænsninger eller restriktioner for indretning. Event Design skal inddrages for vurdering af indretning i disse områder.

**Fire Restrictions Zone: - Yellow -**  
Special terms, limitations or restrictions for build up. Event Design must be involved in the assessment of build up in these areas.

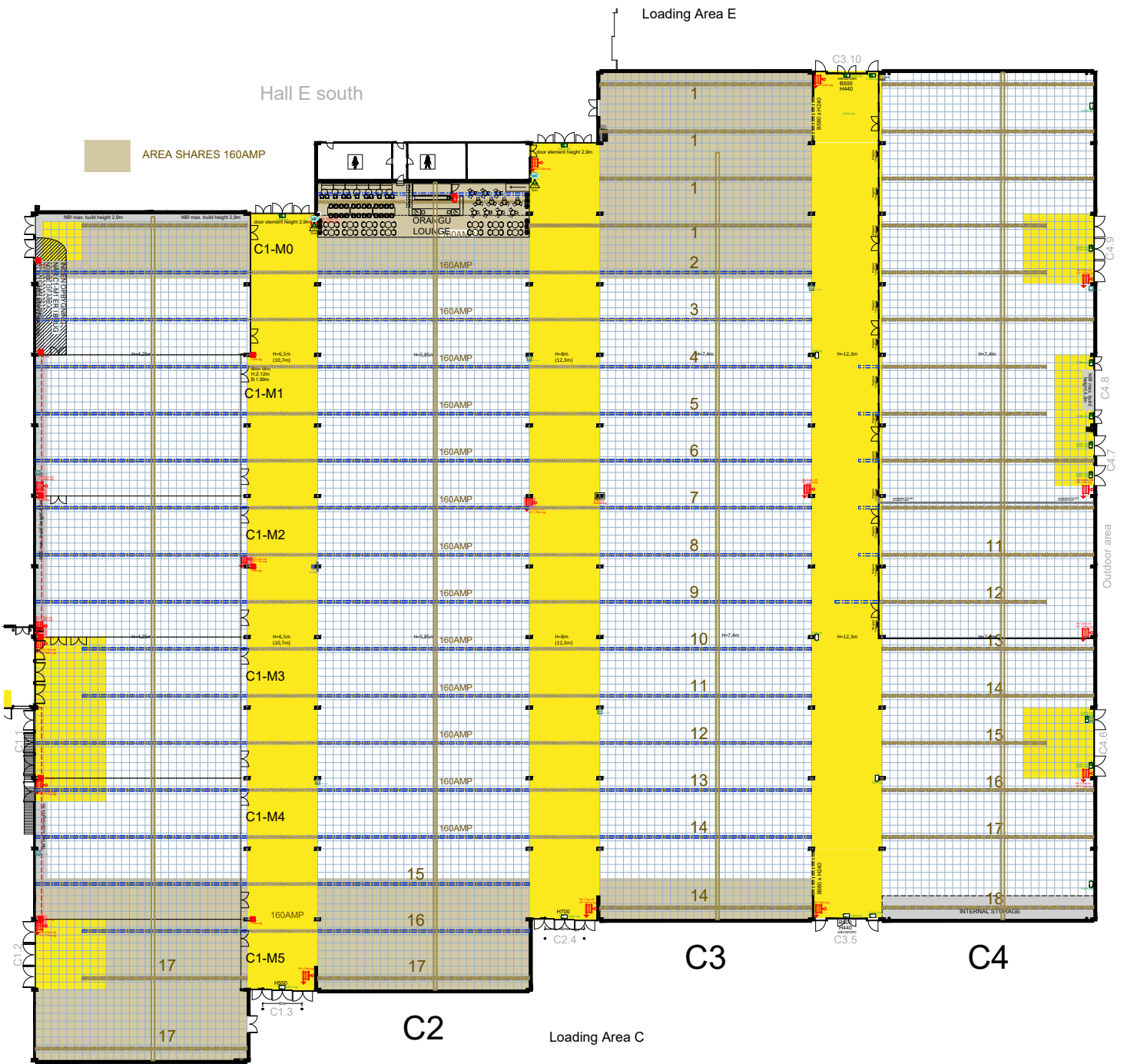
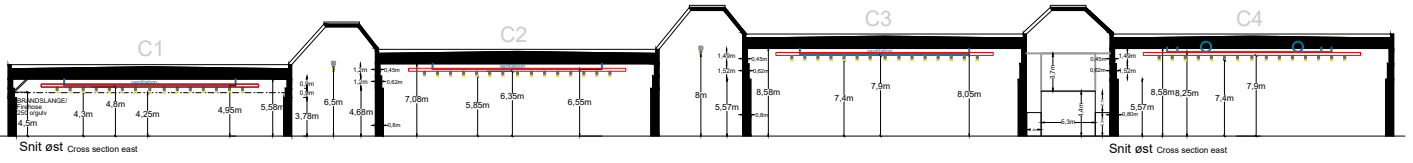
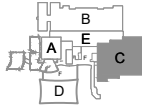
**Brand Restriktions Zone: - Red -**  
Ingen indretning tilladt, der kan dog være enkeltevis undtagelser og dispensationer. Kontakt Sikkerhedsafdelingen for evt. dispensationer.

**Fire Restrictions Zone: - Red -**  
No build up permitted, however there may be individual exceptions and dispensations. Contact the Security Department for any dispensations



# HAL C Hall C

SCALE 1:750 - FORMAT A4



## C1

OBS! gældende for alle C-hals mødelokaler

### DETAILS Gulv/Floor

- 1x1m GRID
- BRANDTRYK  
Fire-alarm
- ELSKAB  
Power cabinet
- IT RACK  
IT cabinet
- Kamera  
Cameras
- SØJLE 40x80CM  
Pillar 40x80cm
- SLANGEVINDER  
Fire-hose reel
- KABELGRAV  
Cable duct
- STRØMSKINNE  
Power rail

**Brand Restriktions Zone: - Gul -**  
Særlige vilkår, begrænsninger eller restriktioner for indretning. Event Design skal inddrages for vurdering af indretning i disse områder.

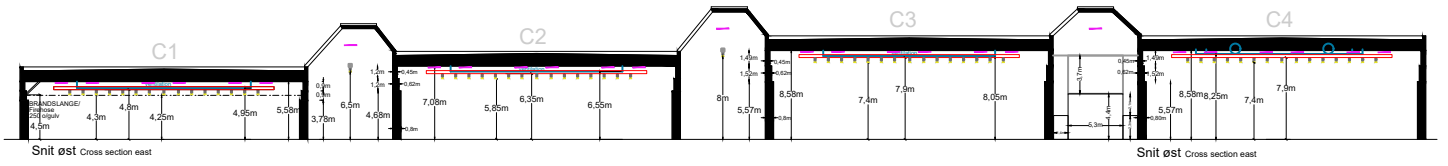
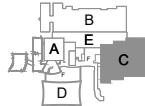
**Fire Restrictions Zone: - Yellow -**  
Special terms, limitations or restrictions for build up. Event Design must be involved in the assessment of build up in these areas.

**Brand Restriktions Zone: - Red -**  
Ingen indretning tilladt, der kan dog være enkeltevis undtagelser og dispensationer. Kontakt Sikkerhedsafdelingen for evt. dispensationer.

**Fire Restrictions Zone: - Red -**  
No build up permitted, however there may be individual exceptions and dispensations. Contact the Security Department for any dispensations

# HAL C Hall C

SCALE 1:750 - FORMAT A4

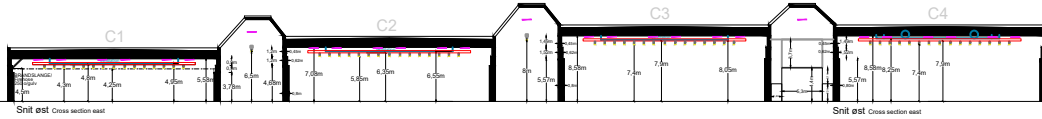
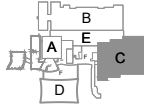


## DETAILS Loft/Ceiling

- BRANDTRYK  
Fire alarm
- LYS RIG M/SPOTS  
Lighting truss with spots
- SØJLE 40x80CM  
Pillar 40x80cm
- IT RACK  
IT cabinet
- Kamera  
Cameras
- SLANGEVINDER  
Fire-hose reel
- VENTILATION  
Ventilation
- RIGGEPUNKTER I LOFT  
Rigging points in ceiling
- LED ARMATUR  
LED PANEL

# HAL C Hall C

SCALE 1:750 - FORMAT A4



# RIGGING INFORMATION

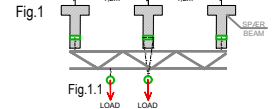
## RIGGING INFO

### NOTE (DK):

#### Rigging - sikkerheden i højsædet

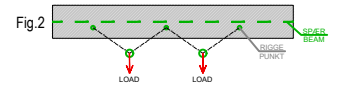
På tegningen over C-hallen kan man se alle brugbare riggehuller

De er markeret med symbolet , og man kan altid rigge direkte i dem med en vægt på op til 200 kg (Fig.1).



Hvis man har behov for ophæng i en position mellem to riggepunkter, kan det opnås med enten bridling (hvis riggehullerne er i samme spær - se Fig 2) eller ved at underhænge et riggstykke mellem to eller flere spær (Fig. 1.1). Bridling er tilladt mellem riggepunkter i samme spær (Fig 2) Bridling er ikke tilladt mellem riggehuller på tilstødende spær. Der kan rigges mellem spær ved at hænge et riggstykke nedenunder. (Fig. 1.1)

Hvis der er behov for et riggstykke, så kontakt din koordinator i Bella Center for et tilbud. Koordinatoren kan også vejlede generelt omkring mulighederne.



Rigge huller (afstand imellem spær 120cm)

- Grøn - 200kg
- Lilla - 200kg
- Orange - 50kg
- Rød - Kan ikke belastes yderligere - riggehuller benyttes til den permanente rig.

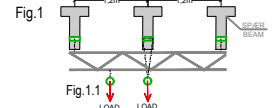
Laster er totalaster inkl. talje beslag, rig mv.

Øvrige punkter kan belastes med 200kg pr. punkt.

### NOTE (UK):

#### Rigging - safety first

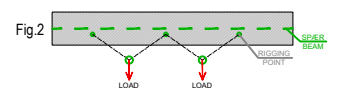
The drawing of the C-hall shows all accessible rigging points indicated with the symbol . All of these rigging points separately for rigging up to 200kg (Fig.1).



If you have a need for rigging between two rigging points, this can be solved by using bridling (if the points are in the same beam - Fig 2) or by adding a truss underneath two beams or more (Fig. 1.1).

Bridling is allowed between rigging points on the same beam. (Fig 2)

Bridling is not allowed between rigging points placed on adjacent beams. Specific rigging positions can still be achieved by hanging a truss underneath. (Fig. 1) Please contact your coordinator at Bella Center for further inquiries and quotes.



Rigging Points (Distance between beams 120cm)

- Green - 200kg
- Purple - 200kg
- Orange - 50kg
- Red - In use for permanent truss - no extra load allowed

Load is a total of chains, blocks, truss etc.

All other rigging points can be used for 200kg

## DETAILS Loft/Ceiling

- BRANDTRYK  
Fire-alarm
- LYS RIG M/SPOTS  
Lighting truss with spots
- SØJLE 40x80CM  
Pillar 40x80cm
- IT RACK  
IT cabinet
- Kamera  
Cameras
- SLANGEVINDER  
Fire-hose reel
- VENTILATION  
Ventilation
- RIGGEPUNKTER I LOFT  
Rigging points in ceiling
- LED ARMATUR  
LED PANEL

# Hal D

## – en kort beskrivelse

### Adgang til hal D

På tegningen kan du se adgangen til hal D.

### Hallens frihøjde

Underkant skørt: 11,7 meter

Underkant spær: 12,5 meter

Såfremt man har et specifikt krav til en lofthøjde i et givent område bedes dette afklares med koordinator.

### Belysning

Hallen er udstyret med en grundbelysning, der kan zone inddeles og dæmpes (1-100%).

Lyskilde: Pendelarmatur Lumitech LUFO IV: LED 20.000 Lumen out. 3.000 Kelvin, CRI 80-89. MacAdam SDCM 3. Dali dimmable (1-100%). Flicker free.  
Blænding under 25. Minimum 300 lux på gulv.  
Hallen er inddelt i 38 zoner tilsluttet DMX House Control.

Effekt belysning på facade. RGBW DOT lys. Farve kan vælges ved bestilling.

### Loft/Ophængning i loft

Brandventilationsvinduerne i loftet er uden lysindfald.

Wirer: Der kan ophænges wire med en maks. belastning på 99 kg, dog afhængigt af øvrig ophængning i loftet.  
Detailtegningen indeholder information om spær eller riggepunkternes placering.

Venligst kontakt din koordinator i Bella Center for godkendelse. Bella Center forbeholder sig ret til evt. at tilpasse placering.

#### Taljepunkter og rigning:

Per 1m kan der belastes enten 100kg-60kg eller 50kg se tegning på side 18.

Per 3m kan der maksimalt belastes med 300kg

Der kan ikke rigges i skinner til foldevæg !

Hvis man har behov for ophæng i en position mellem to riggepunkter, kan det opnås med bridling.  
Har du brug for rigning, bedes du kontakte din Bella center koordinator for muligheder, validering og tilbud.  
Bella Center forbeholder sig ret til evt. at tilpasse placering.

### Gulv

Gulvet er et flisebelagt betongulv. Flisen er en lys betonflise. Gulvet er udformet med en række forsyningskanaler, som ligeledes er dækket af aftageligt dæksel.

Gulvet kan klare følgende belastninger:

15x15 cm jævnt fordelt trykflade = 2500 kg

30x30 cm jævnt fordelt trykflade = 4000 kg

Hallen har gulvkanaler til fremførsel af vand, internet og VVS. Kanalernes indbyrdes afstand (c-c) er 9 m. Kanalerne er 60 cm brede. Kanaldæksel: 60x120cm. Disse kan klare overkørsel fra 9t akseltryk fra lastbiler. Lastbiler og/eller trucks må dog ikke parkere med hjulene lige på lågene.  
Længerevarende enkeltlaste over 1000 kg fordelt på 30x30cm skal undgås.

## Hall D – a brief description (1 of 2)

### Accessing Hall D

Please refer to the floor plan where access points are indicated.

### Ceiling height

Lower edge of skirt: 11,7 meter

Lower edge of truss: 12,5 meter

If you have a specific requirement for a ceiling height in a given area, please clarify this with your coordinator.

### General lighting

The hall is equipped with a basic lighting which can be zoned and dimmed (1-100%).

Light source: Pendant luminaire Lumitech LUFO IV: LED 20,000 Lumen out. 3,000 Kelvin, CRI 80-89. MacAdam SDCM 3. Dali dimmable (1-100%). Flicker free.

Glare below 25. Minimum 300 lux on floor. The hall is divided into 38 zones connected to DMX House Control.

Effect lighting on façade. RGBW DOT light. Color can be selected when ordering.

### Ceiling/suspension in the ceiling

The fire ventilation windows in the ceiling are without inflow of lights.

Drop wires: We can mount drop wires with a weight up to 99 kg., however, depending on other loads in the ceiling.

The detail drawings for stands will include information on the location of the beams or rigging points.

Please contact your coordinator at Bella Center for approval. Bella Center reserves the right to adjust placement.

#### Hoist and rigging:

Per 1m the maximum load is 100kg-60kg or 50kg see drawing at page 18.

Per 3m the maximum load is 300kg

No rigging allowed in rails for folding walls !

If you need suspension in a position between two rigging points, this can be achieved by bridling.

If you need rigging, please contact your Bella Center coordinator for options, validation and offers.

Bella Center reserves the right to adjust placement.

### Floor

The floor is a tiled concrete floor. The tile is a light concrete tile. The floor is designed with a number of supply ducts, which are covered by a removable cover.

The floor can withstand the following loads:

15x15 cm evenly distributed printing surface = 2500 kg

30x30 cm evenly distributed printing surface = 4000 kg

The hall has floor channels for water supply, internet and plumbing. The distance between the channels (c-c) is 9 m. The channels are 60 cm wide. Duct cover: 60x120cm. These can handle overtaking from 9000kg axle load from trucks. However trucks is not allowed to park with the wheels directly on the duct covers. Longer-lasting single loads over 1000 kg distributed over 30x30cm must be avoided.



# Hal D

## – fortsat

### Mobilvægge

Hallen er udstyret med mobilvægge til opdeling af hallen i op til 5 rum. Et væg modul er 123cm i bredden. Mobilvæggene kan parkeres i 4 tilhørende magasiner der er afdækket med væggar-diner. Service døre mål h260cm b180cm. Væggene må kun betjenes af Bella Center personale og mens hallen er uden gæster.

Dæmpning: 53dB  
Overflade og farve: Malet grå (RAL 7037) stålplade.

### Vinduer og mørklægning

I hallens nord-, syd- og vestvendte facader er der vinduer, som kan mørklægges efter behov (manuelt med kontakt på væg ved vinduesparti).

### Vægge

Brandskab og slangevinder – må ikke tildækkes.

Væggene er beklædt med henholdsvis vægtæpper (Kvadrat Dawn 2, farve 792, mørke blå) og akustikpaneler i 3 dybder og med skærende fuger. Panelerne fremstår med perforerede, galvaniserede stålplader opsat med 3 forskellige afstandsdybder til væg.

### Port og døre

Det er muligt at benytte hallens porte til tung trafik (9 tons akseltryk).

Gavl port, D1, (bxh): 5,0 x 4,5 m  
Gavl port, D2, (bxh): 3,5 x 3,5 m  
Gavl port, D3, (bxh): 3,5 x 3,5 m  
Gavl port, D4, (bxh): 5,0 x 4,5 m  
Gavl port, D5, (bxh): 3,5 x 3,5 m

3 af dørene i hallens vestlige facade (mod logistikzonen) kan anvendes til kørsel med truck.

### Luft

Hal D har aircondition

### Strøm

Hallen har en samlet strømkapacitet på 2.000A. Af disse kan der udtages 4 stk 400A via PowerLock i hallens sydlige væg. Til udstillinger m.m. er det muligt at fremføre strøm via hallens gulvkanaler, som går på tværs af hallens længderetning. De er placeret med 9 meters mellemrum og er som standard forsynet med 200A per kanal.

### Lyd og støjgrænser

Af hensyn til gæster og naboer, må der maksimalt afspilles musik med et støjniveau på 96dB(A). Vores naboer må således kun opleve 40dB(A) i en halv time målt ved udvendig husfacade i tidsrummet kl. 22:00-07:00. For øvrige tidsrum – se <https://mst.dk/luft-stoej/stoej/stoejgraenser/graensevaerdier-virk-somheder/>.

## Hall D– a brief description (1 of 2)

### Mobile Walls

The hall is equipped with mobile walls for dividing the hall up to 5 individual rooms. A wall module is 123cm in width. The mobile walls can be parked in 4 related magazines covered with wall curtains. Service doors measurement h260cm w180cm) The walls may only be operated by Bella Center staff and while the hall is without guests.

Attenuation: 53 dB  
Surface and color: Painted gray (RAL 7037) steel plate.

### Windows and blackout

In the north, south and west facing facades of the hall, there are windows that can be darkened if needed.

### Walls

Fire cabinet and hose reel – must not be concealed.

The walls are covered with curtains (square Dawn 2, the color 792, dark blue ) and acoustic panels, respectively, in 3 depths and with intersecting joints. The panels appear with perforated galvanized steel sheets, set up in 3 different wall depths.

### Gate and doors

It is possible to use the hall gates for heavy traffic (9 tons axle load).

End gate, D1, (wxh): 5.0 x 4.5 m  
End gate, D2, (wxh): 3.5 x 3.5 m  
End gate, D3, (wxh): 3.5 x 3.5 m  
End gate, D4, (wxh): 5.0 x 4.5 m  
End gate, D5, (wxh): 3.5 x 3.5 m

3 of the doors in the west facade (at the logistic zone) can be used for truck driving

### Air

Hall D has air conditioning.

### Electric power

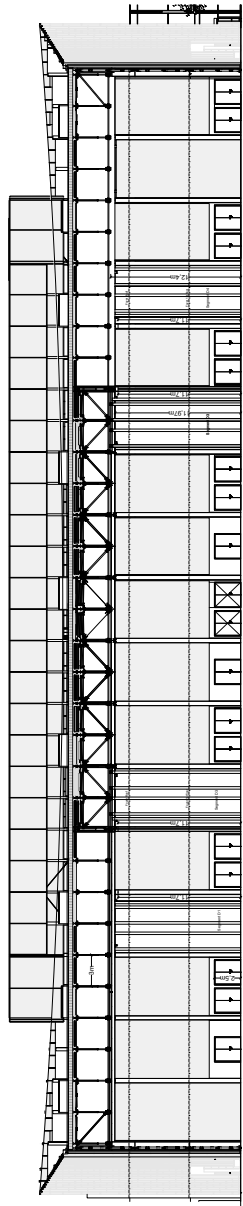
The hall has a total electric power capacity of 2.000A. From these, can 4x 400A be taken out through PowerLock in the south wall of the hall. For exhibitions etc. it is possible to carry electric power in subfloor service ducts, across the longitudinal direction of the hall. They are located at 9 meter intervals and are equipped with 200A per duct as standard.

### Sound and noise limits

In the interest of guests and neighbors, music with a maximum noise level of 96dB (A) may be played. Our neighbors may thus only experience 40dB (A) for half an hour, measured at the exterior house facade, in the period between 22: 00-07: 00. For other time periods - see <https://mst.dk/luft-stoej/stoej/stoejgraenser/graensevaerdier-virk-somheder/>.

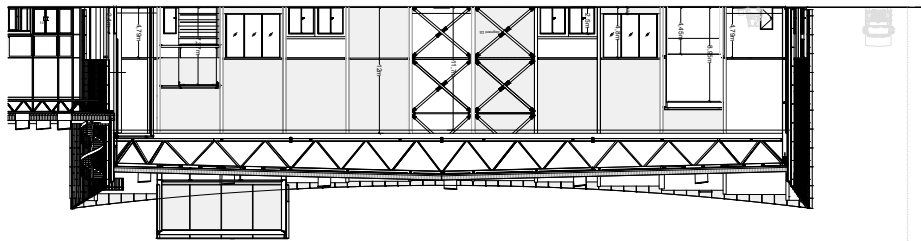
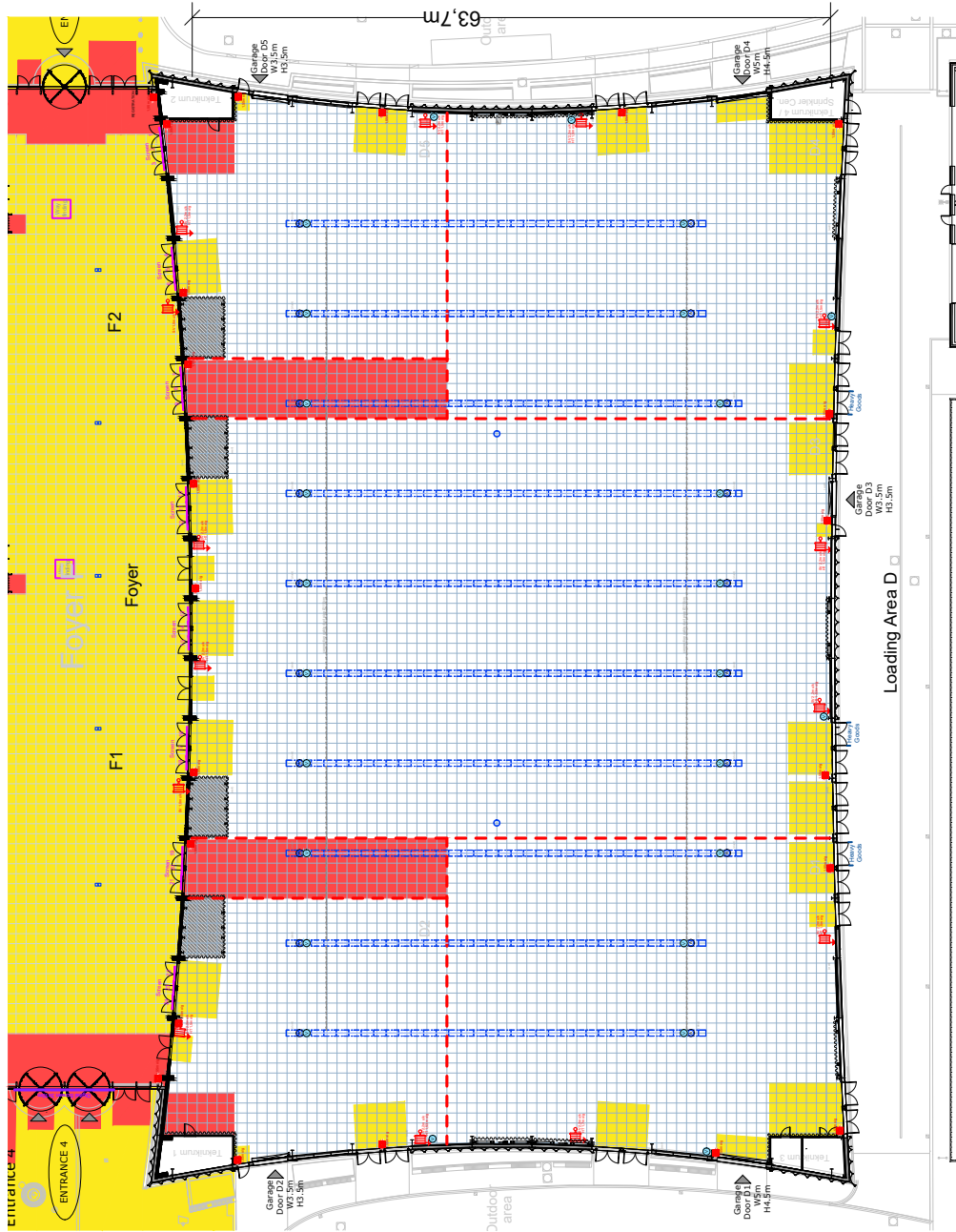
# HAL D Hall D

SCALE 1:750 - FORMAT A4



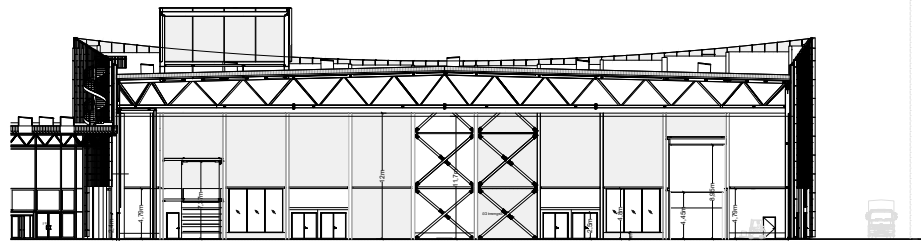
Snit øst Cross section east

102.2m



Snit nord Cross section north

Snit syd Cross section south



## DETAILS Gulv/Floor

- 1x1m GRID
- BRANDTRYK Fire-alarm

- SLANGEVINDER Fire-hose reel

- FOLDEVÆG (like mulligt at rigge her) Movable Wall (rigging is not possible here!)

- KABELGRAV Cable duct

- VAND Water

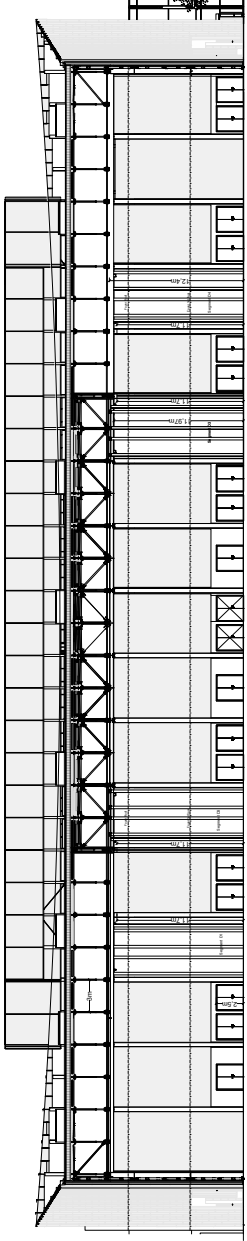
- AFLØB Drainage

- VAND & AFLØB Water & Drainage

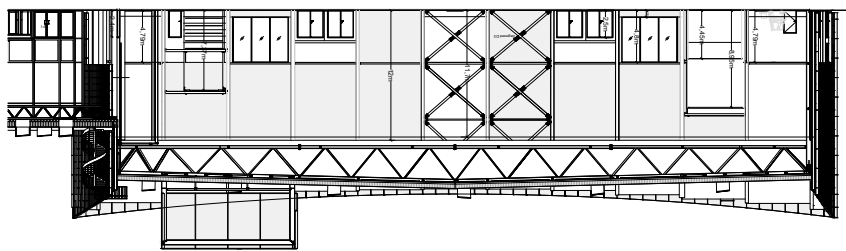
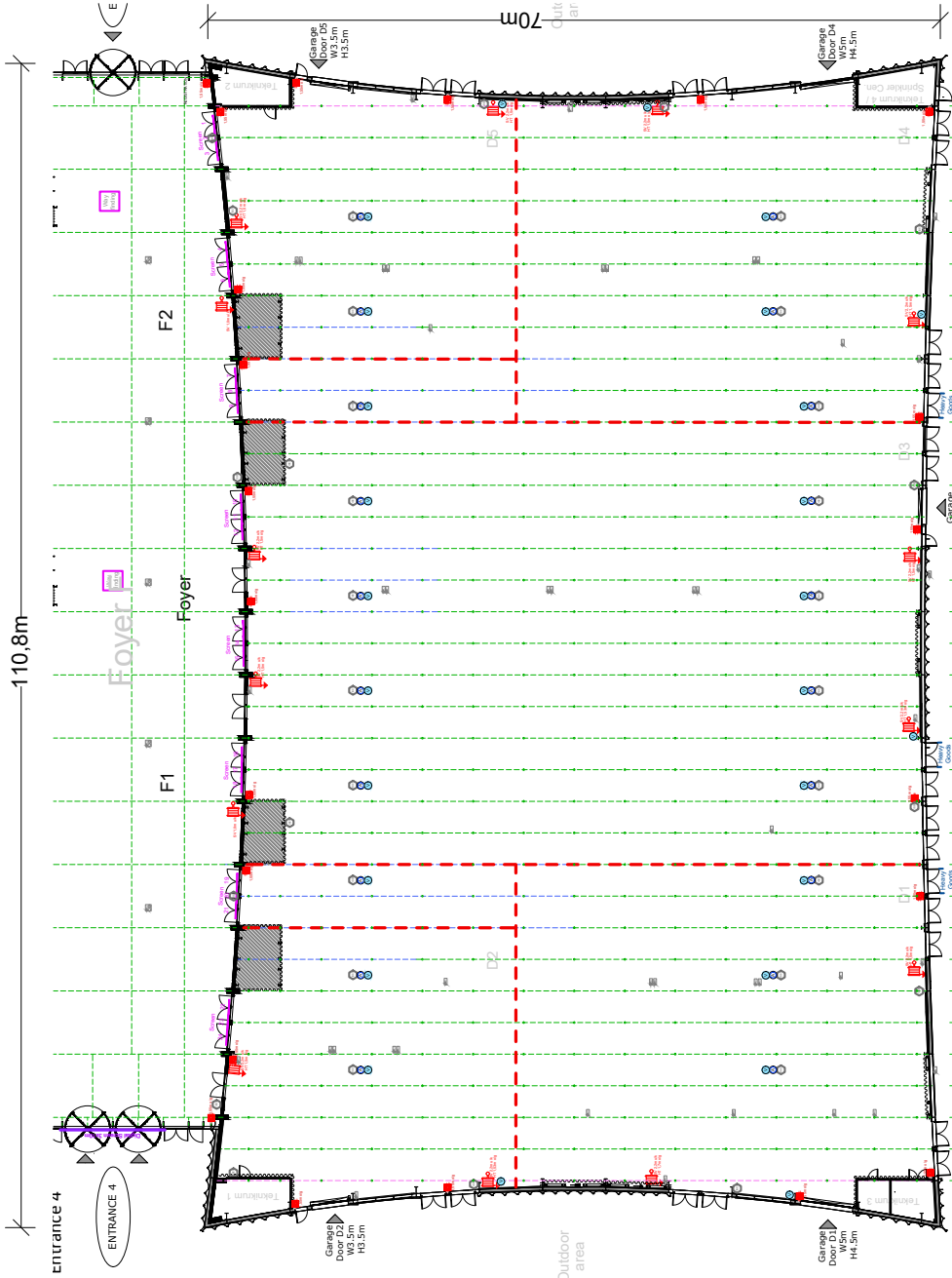
**Brand Restriktions Zone - Gul -**  
 Særlige vask, belysningsanlæg eller restriktioner for indretning.  
 Event Design skal indlægges for vurdering af indretning i disse områder.  
**Fire Restriktions Zone - Yellow -**  
 Event Design must be included in the assessment of build up in these areas.  
**Brand Restriktions Zone - Rød -**  
 Ingen indretning tilladt, der kan dog være enkeltevis undtagelser og dispensationer.  
 Kontakt Støtteafdelingen for evt. dispensationer.  
 No build up permitted, however there may be individual exceptions and dispensations. Contact the Security Department for any dispensations.

# HAL D Hall D

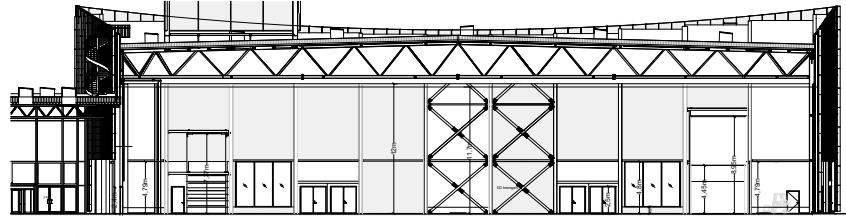
SCALE 1:750 - FORMAT A4



Snitt øst Cross section east



Snitt nord Cross section north



Snitt syd Cross section south

## DETAILS Loft/Ceiling



SPÆR TIL RIGGING  
100kg per 100cm  
Roof beam for rigging  
○ = TOP SPÆR  
Top beam

SPÆR TIL RIGGING  
60kg per 100cm  
Roof beam for rigging  
○ = TOP SPÆR  
Top beam

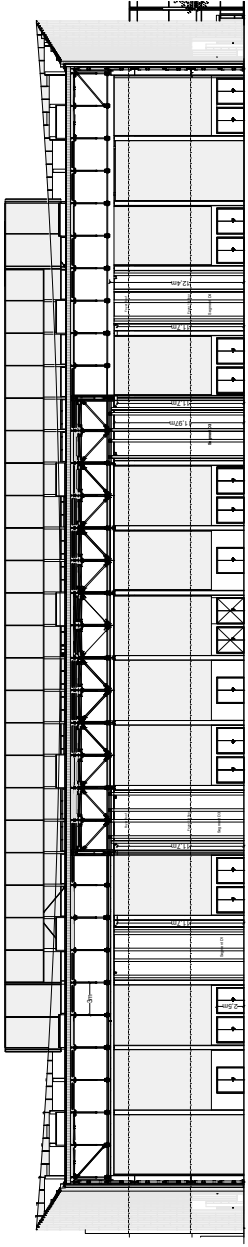
SPÆR TIL RIGGING  
50kg per 100cm  
Roof beam for rigging  
○ = TOP SPÆR  
Top beam

SPÆR - IKKE TIL OVERBELASTNING  
Roof Non load beam

FOLDEVÆG  
Movable Wall

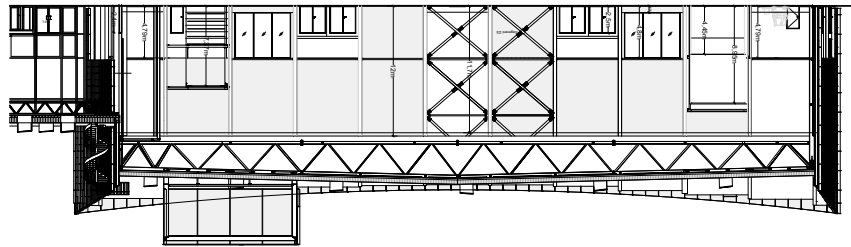
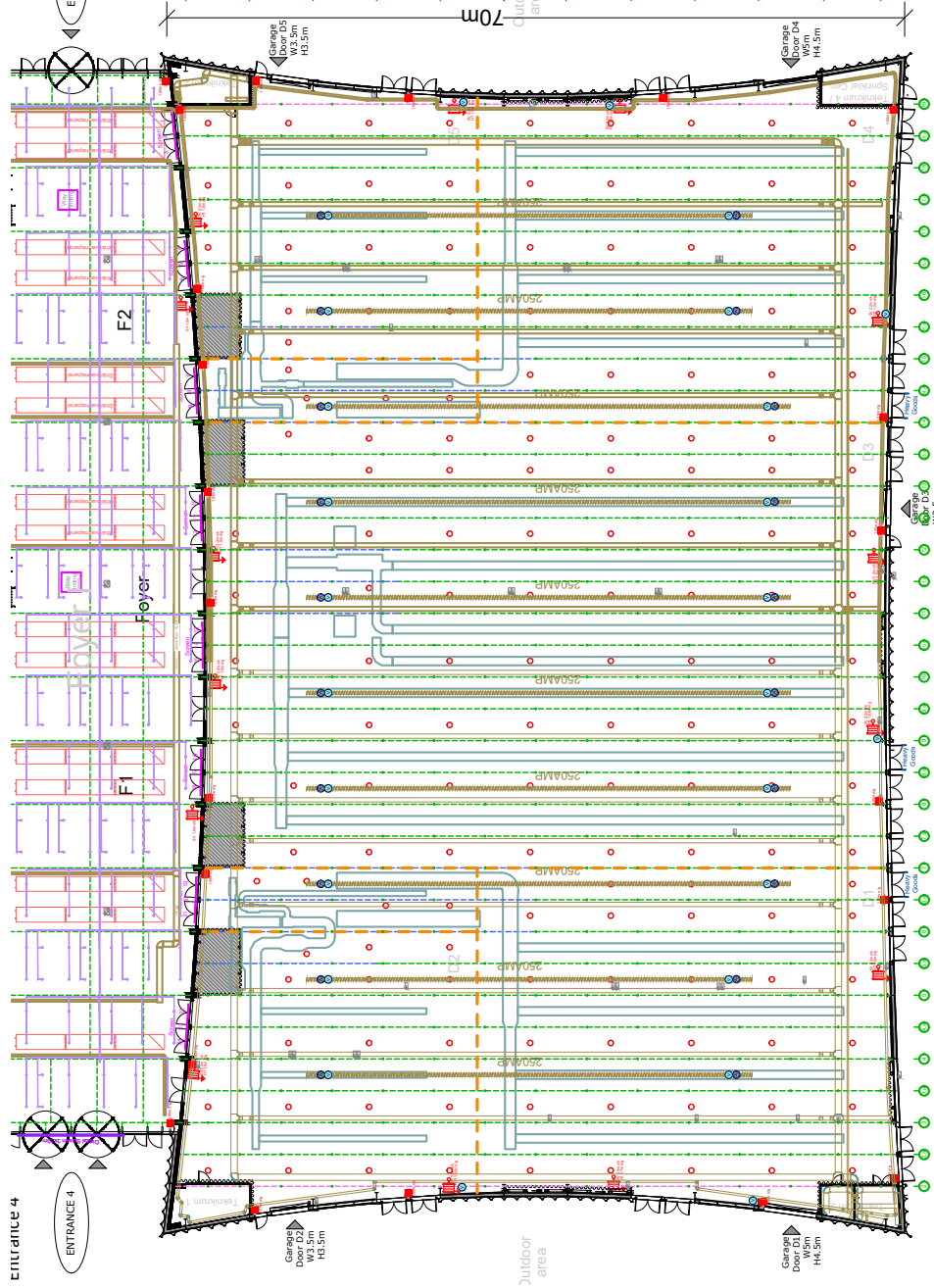
# HAL D Hall D

SCALE 1:750 - FORMAT A4

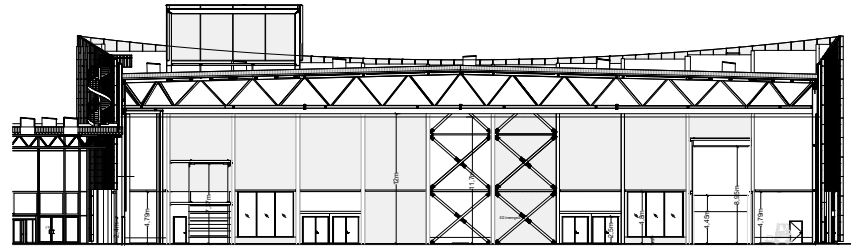


Snitt øst Cross section east

110.8m



Snitt nord Cross section north



Snitt syd Cross section south

## DETAILS Loft/Ceiling

-  SLANGEVINDER  
Fire-hose reel
-  SPÆR TIL RIGGNING  
Roof beam for rigging
-  SPÆR - IKKE TIL OVERBELASTNING  
Roof Non load beam
-  FOLDEVÆG  
Movable Wall
-  LYSPENDEL  
Light pendant
-  KABELBAKKE  
Cable tray
-  VENTILATION  
Ventilation



# Hal E

## – en kort beskrivelse

### Adgang til hallen

På tegningen kan du se numrene for de enkelte porte, der giver adgang til hallen.

### Hallens frihøjder

Hallens frihøjde, målt fra gulv til underkant af rig messelampe er 9,30m. Se side 21-22.

### Loft/Ophængning i loft

Wirer:

Der kan monteres wire med en maks. belastning på 99 kg, dog afhængigt af øvrig belastning i loftet.

Kontakt venligst din Bella Center koordinator for godkendelse. Bella Center forbeholder sig ret til evt. at tilpasse placering.

Taljepunkter og rigging:

Der kan rigges i spær med en maksimal belastning på 500kg per knudepunkt, dog afhængigt af øvrig belastning i loftet.

eller

Der kan rigges i vinklet spær med en maksimal belastning på 250kg per knudepunkt, dog afhængigt af øvrig belastning i loftet.

Har du brug for rigning, bedes du kontakte din Bella Center koordinator for muligheder, validering og tilbud.

Bella Center forbeholder sig ret til evt. at tilpasse placering.

### Belysning

Grundbelysning består af LED armaturer, farve 4000 kelvin. Lys niveau er 800 lux 0,85 over gulv. Lys niveau bestilles og sættes fra central hold. Typisk lys niveau ved udstilling er 85%.

Hallen er udstyret med rig-konstruktioner med 150W CDM spot, farve 5000 kelvin, som skal tilkøbes jævnfør tilbud.

Bemærk venligst, at sollys igennem glastaget kan være til gene ved brug af pc, video, osv.

### Gulv

Installation af el, VVS, netværk og trykluft sker via kanaler i hallens betongulv. Kanalerne ligger i hallens længderetning med en indbyrdes afstand på 15 m.

Gulvet kan klare følgende belastninger:

Hjultryk (tvillingehjul)	5.500 kg/m <sup>2</sup>
Punktbelastning fordelt på 15x15cm	4.000 kg
Max belastning (lastbil inkl. læs)	4.000 kg/m <sup>2</sup>

### Søjler

Hallens betonsøjler er 40x40cm eller 40x80cm.

Brandskab – må ikke tildækkes.

### Luft

Hallen har opvarmet ventilation med separate køleunits.

## Hall E – a brief description

### Accessing the hall

Please refer to the floor plan where access points are indicated.

### Ceiling heights

The ceiling height measured from the floor to the lower edge of the lighting truss is 9,30m. Please see page 21-22.

### Ceiling/suspension in the ceiling

Dropwires:

Dropwires can be mounted with a maximum load of 99 kg, however, depending on other loads in the ceiling.

Please contact your Bella Center coordinator for approval. Bella Center reserves the right to adjust placement.

Hoist and rigging:

Rigging can be done in beams with a maximum load of 500kg per node, but also depending on other loads in the ceiling.

or

Rigging can be done in angled beams with a maximum load of 250kg per node, however depending on other loads in the ceiling.

If you need rigging please contact your Bella Center coordinator for options, validation and offers.

Bella Center reserves the right to adjust placement.

### General lighting

Basic lighting consists of LED luminaires, color 4000 kelvin. Light level is 800 lux 0.85 above floor. Light level is ordered and set from central team. Typical light level at exhibition is 85%.

The hall is equipped with rig constructions with 150W CDM spot, color 5000 kelvin, which must be purchased according to offers.

Please note that sunlight from the glass roof can cause inconvenience with reflected light when using pc's, videos etc.

### Floor

Power, plumbing, network and compressed air will, if possible, be supplied via the sub-floor service ducts build-in the Centre Hall's concrete floor. These run from north to south at 15 m intervals throughout the length of the hall.

The floor can carry the following loads:

Wheel loads (twin wheels)	5,500 kg per sq.m.
Single-point loads per 15x15cm	4,000 kg
Max loads (load incl. weight of truck)	4,000 kg per sq.m.

### Pillars

A limited number of free-standing concrete pillars are to be found in the northern end of the hall. These measure 40x40cm or 40x80cm.

Fire hose reel – must not be concealed.

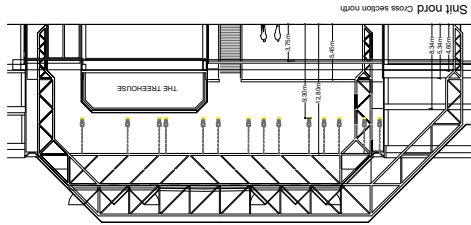
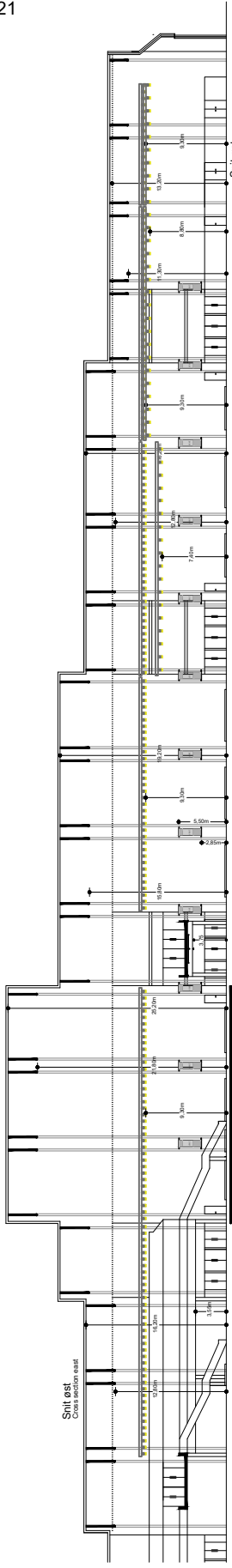
### Air

The hall has heated ventilation with separate cooling units.

**BELLA ·  
CENTER**  
COPEN  
HAGEN

# HAL E Hall E

SCALE 1:750 - FORMAT A4



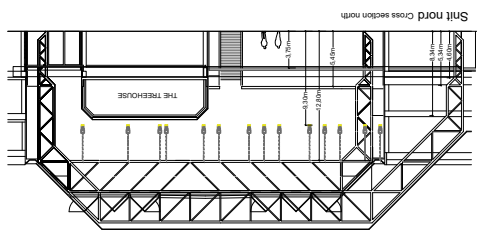
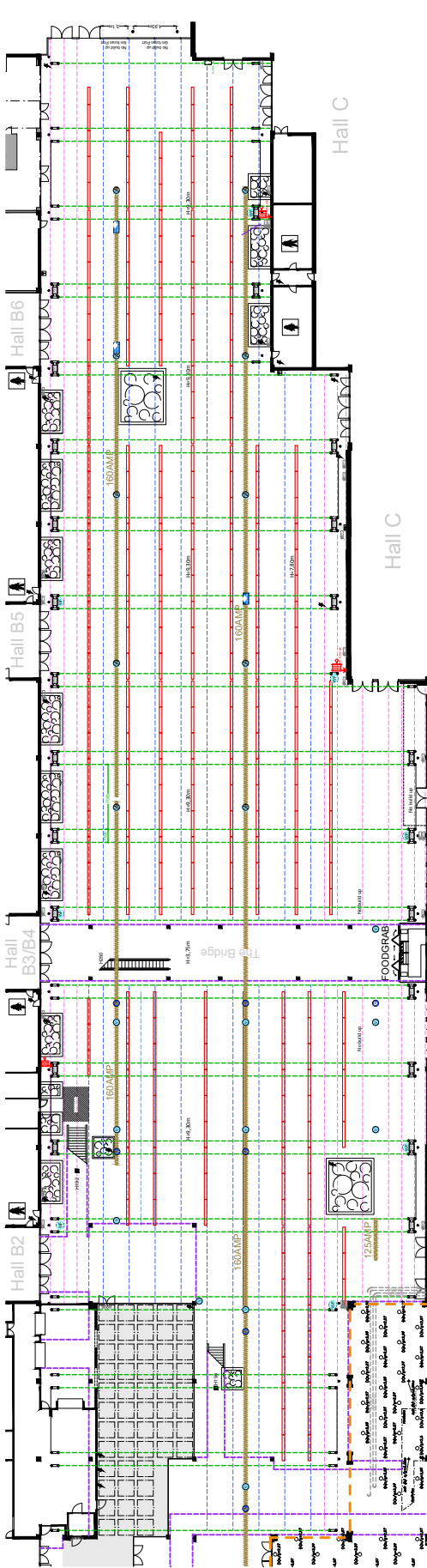
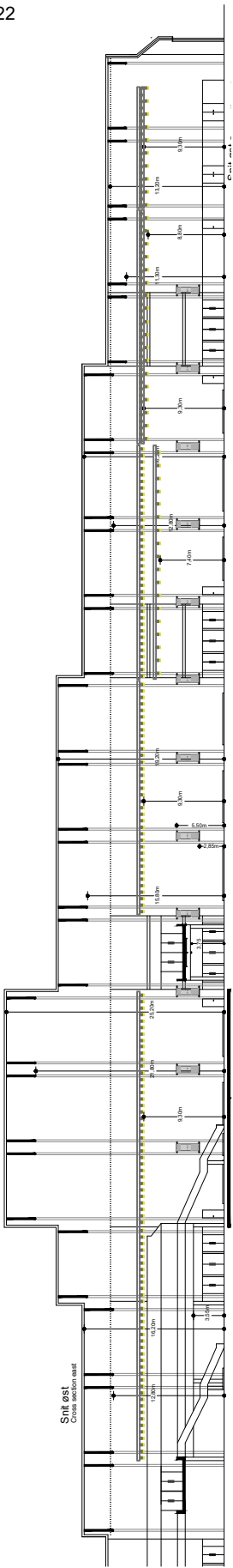
**Brand Restriktions Zone: - Gul -**  
 Selveie, begrensninger eller restriktorer for retting.  
 Event Design skal vurderes for vurdering i disse områder.  
 For detaljer, se Event Design og Brand Design.  
 Spesielle tiltak og restriksjoner for bygg.  
**Brand Restriktions Zone: - Rød -**  
 Event Design skal vurderes for vurdering i disse områder.  
 For detaljer, se Event Design og Brand Design.  
 Spesielle tiltak og restriksjoner for bygg.  
**Fire Restriktions Zone: - Rød -**  
 For detaljer, se Event Design og Brand Design.  
 For detaljer, se Event Design og Brand Design.  
 No build-up permitted, however there may be individual exceptions and dispensations. Contact the Security Department for any dispensations.

## DETAILS Gul/Floor

- 1x1m GRID
- SLANGEVINDER Fire-hose reel
- VENTILATION Ventilation
- FOLDEVÆG Movable Wall
- KABELGRAV Cable duct
- AFLØB Drainage
- VAND Water
- VAND & AFLØB Water & Drainage
- SØJLE/SPÆR 2x 0222cm - L=97cm
- Pillar/Beam 2x 0222cm - L=97cm
- SØJLE 40x80cm
- Pillar 40x80cm
- 1 SAL. kant
- 1st floor ledge

# HAL E Hall E

SCALE 1:750 - FORMAT A4



## DETAILS Loft/Ceiling

- 1x1m GRID
- 1st floor ledge



- SLANGEVINDER Fire-hose reel

- SPÆR Beam

- LYS RIG M/SPOTS Lighting truss with spots

- SØJLE 40x40CM Pillar 40x40cm

- SØJLE 40x80CM Pillar 40x80cm

- SØJLE/SPÆR 2X Ø22CM - L=97CM Pillar/Beam 2x Ø22cm - L=97cm

- VENTILATION Ventilation

- SØJLE/SPÆR 2X Ø22CM - L=97CM Pillar/Beam 2x Ø22cm - L=97cm
- VENTILATION Ventilation

# Foyer (F0-F7)

## – en kort beskrivelse

### Adgang til Foyer

På tegningen ses svingdørene, som udgør Indgang 4, 5 og 6, der giver adgang til Foyer F0-F7.  
Gods tilkørsel bedes aftalt med arrangementskoordinator, da adgang er afhængig af den samlede udlejning af arealerne i den givne periode.

### Hallens frihøjder 1. sal og stue

Lofthøjde i Foyer F1-F2, underkant spær/armatur, 10,5 meter  
Lofthøjde i Foyer F3-F5 (under det nye dæk / nedsænket loft), 3,6 meter  
Lofthøjde i Foyer F6 (under det nye dæk / nedsænket loft), 3,6 meter  
Lofthøjde i Foyer F7 underkant spær, 8,25 meter  
Såfremt man har et specifikt krav til en lofthøjde i et givent område kontakt venligst Bella Center

### Belysning

F0+F3 er udstyret med kompaktør 26W/830, indbygget i nedsænket loft. Effekt belysning i loft. RGB lys. Farve kan vælges ved bestilling. F1+F2 og F4 + F6 under balkon er udstyret med en grundbelysning bestående af lyskilder monteret under spær i det dobbelthøje rum og indbygget i det nedsænket loft. LED 2500-4000 lumen, 3000 kelvin, F5 er udstyret med sorte pender 42W/840 kompaktør.

F6/F7 er udstyret med grå pender hvor der er kompaktør 42W/830, F1/F2 er der 2 rækker effekt belysning, RGBW LED lys. Farve kan vælges ved bestilling

### Loft/Ophængning i loft

Wirer: Der kan foretages lette ophæng, så som banner.  
Detailtegningen indeholder information om spær eller riggepunkternes placering.

Kontakt venligst din koordinator i Bella Center for muligheder, validering og tilbud.  
Bella Center forbeholder sig ret til evt. at tilpasse placering.

### Gulv

#### F1, F2, F4

Gulvet er et flisebelagt betongulv. Flisen er primært en lys betonflise, afbrudt af sorte fliserækker.  
Gulvet kan klare følgende belastninger:  
15x15 cm jævnt fordelt trykflade = 2500 kg  
30x30 cm jævnt fordelt trykflade = 4000 kg

#### F5

Gulvet er dækket af marmor/gulvtæppe.  
Gulvet kan klare følgende belastninger:  
Punktbelastning fordelt på 15x15cm = 4.000 kg  
Kørsel i områderne med udendørskøretøjer er ikke tilladt

#### F0, F3, F6 og F7

Gulvet er et marmorbelagt gulv .  
Gulvet kan klare følgende belastninger:  
Punktbelastning fordelt på 15x15cm = 400 kg  
Max belastning = 400 kg/m<sup>2</sup>  
Motordrevne køretøjer i området skal aftales med Bella Center.

## Foyer (F0-F7) – a brief description (1 of 2)

### Accessing Foyer

The drawing shows the revolving doors, which make up Entrance 4, 5 and 6, which give access to Foyer F0-F7.  
Driveway for Goods should be agreed with the event coordinator, as access depends on the total use of the areas in the given period.

### Ceiling height

Ceiling height in Foyer F1-F2, lower edge of truss / light fittings, 10.5 m  
Ceiling height in Foyer F3-F5 (suspended ceiling), 3.6 m  
Ceiling height in Foyer F6 (suspended ceiling), 3.6 m  
Ceiling height in Foyer F7 lower edge of truss, 8.25 m  
If you have a specific requirement for a ceiling height in any given area, please contact Bella Center.

### General lighting

F0+F3 is equipped with compact tube 26W/830, built into sunken ceiling. Effect lighting in ceiling. RGB light. Color can be selected when ordering. F1+F2 and F4+F6 under balcony are equipped with a basic lighting consisting of light sources mounted under rafters in the double-height room and built into the sunken ceiling. LED 2500-4000 lumens, 3000 kelvin, F5 is equipped with black pendants 42W/840 compact tubes.

F6/F7 is equipped with gray pendants where there are compact tubes 42W/830, F1/F2 there are 2 rows of power lighting, RGBW LED lights. Color can be selected when ordering

### Ceiling/ suspension in the ceiling

Wires: Light suspensions can be made, such as banners.  
The detail drawings for stands will include information on the location of the beams or rigging points.

Please contact your coordinator at Bella Center for options, validation and offers.  
Bella Center reserves the right to adjust placement.

### Floor

#### F1, F2, F4

The floor is a tiled concrete floor. The tile is primarily a light concrete tile, interrupted by black rows of tiles.  
The floor can withstand the following loads:  
Point load distributed per 15x15cm 2500 kg  
Point load distributed per 30x30cm 4000 kg

#### F5

The floor is covered with marble / carpet.  
The floor can withstand the following loads:  
Point load distributed on 15x15cm = 4,000 kg  
Driving in areas with outdoor vehicles is not permitted

#### F0, F3, F6 and F7

The floor is a marble floor.  
The floor can withstand the following loads:  
Point load distributed on 15x15cm = 400 kg  
Max load = 400 kg / m<sup>2</sup>  
Motor vehicles in the area must be agreed with Bella Center.

# Foyer (F0-F7)

## – fortsat

### Vinduer og mørklægning

På hallens nord- og sydvendte vægge, er der glasfacader, som giver adgang til dagslys. Det samme er gældende for ovenlys-vinduerne i det meste af hallerne F1-F4s lofter.

Vinduerne kan ikke mørklægges.

### Vægge

Brandskabe og slangevindere – må ikke tildækkes. Væggene varierer i udtryk fra område til område. Nogle er beklædt med trælammeler i en kombination med perforerede stålplader. Andre er beklædt med planter og en endelig er der malede betonvægge.

### Elevatore

Der er følgende elevatore til Balkonområderne:

F0 elevator (til Aud.10-12 backstage)  
Max belastning, 21 personer - Max belastning, 1600 kg  
Døråbning (bxh): 110 x 204 cm  
Elevator dybde: 260 cm - Elevator bredde: 140  
Elevatortype: Personeelevator (ikke gods)

F3 elevator (til Balcony 1)  
Max belastning, 8 personer - Max belastning, 630 kg  
Døråbning (bxh): 90 x 207 cm  
Elevator dybde: 140 cm - Elevator bredde: 110 cm  
Elevatortype: Personeelevator (ikke gods)

F6 elevator (til Balcony 3)  
Max belastning, 13 personer - Max belastning, 1000 kg  
Døråbning (bxh): 100 x 210 cm  
Elevator dybde: 210 cm - Elevator bredde: 110 cm  
Elevatortype: Personeelevator (ikke gods)

F6 elevator (til Balcony 4) (gods)  
Max belastning, 13 personer - Max belastning, 1000 kg  
Døråbning (bxh): 120 x 200 cm (220cm indeni)  
Elevator dybde: 240 cm - Elevator bredde: 120 cm  
Elevatortype: Godselevator

F7 elevator (ved Lokale 22)  
Max belastning, 8 personer - Max belastning, 625 kg  
Døråbning (bxh): 91x 198 cm  
Elevator dybde: 113 cm - Elevator bredde: 125 cm  
Elevatortype: Personeelevator (ikke gods)

### Gods til balkonområder

Det er muligt at benytte godselevator fra Foyer F6 til Balkon 3/4

Desuden er der muligt, at åbne gelænder og dermed løfte paller fra stueetagen fra Foyer F1 til Balkon 1, fra Foyer F2 til Balkon 2 og fra Foyer F6 til Balkon 3/4.

Kontakt venligst din kontaktperson i Bella Center for muligheder, validering og tilbud.

### Luft, Varme / køling

Foyer F0, F1, F2, F3 og F4:  
Foyererne har en kombination af strålevarme og aircondition.  
Foyer F5:  
Foyer F5 har aircondition.  
Foyer F6 og F7:  
Foyer F6 og F7 har ventilation, samt delvis opvarmning fra gulv og ribberør i facaden.

## Foyer (F0-F7) – a brief description (2 of 2)

### Windows and blackout

On the north and south-facing walls of the hall, there are glass facades that provides access to daylight. The same applies to the skylights in most of the ceilings of halls F1-F4.

The windows cannot be blacked out

### Walls

Fire cabinet and hose reel – must not be concealed. The walls vary in expression from area to area. Some are covered with wooden slats in combination with perforated steel plates. Others are covered with plants and finally there are painted concrete walls.

### Elevators

Following elevators to 1st floor areas:

F0 elevator (to Aud. 10-12 backstage)  
Max load, 21 people - Max load, 1600 kg  
Door opening (wxh): 110 x 204 cm  
Elevator depth: 260 cm - Elevator width: 140  
Elevator type: Personnel elevator (not freight)

F3 elevator (to Balcony 1)  
Max load, number 8 people - Max load, number 630 kg  
Door opening (wxh): 90 x 207 cm  
Elevator depth: 140 cm - Elevator width: 110 cm  
Elevator type: Personnel elevator (not freight)

F6 elevator (to Balcony 3)  
Max load, 13 people - Max load, 1000 kg  
Door opening (wxh): 100 x 210 cm  
Elevator depth: 210 cm - Elevator width: 110 cm  
Elevator type: Personnel elevator (not freight)

F6 elevator (to Balcony 4) (freight)  
Max load, 13 people - Max load, 1000 kg  
Door opening (wxh): 120 x 200 cm (220 inside)  
Elevator depth: 240 cm - Elevator width: 120 cm  
Elevator type: Freight elevator

F7 elevator (at meeting room 22):  
Max load, 8 people - Max load, 625 kg  
Door opening (wxh): 91x 198 cm  
Elevator depth: 113 cm - Elevator width: 125 cm  
Elevator type: Personnel elevator (not freight)

### Goods to balcony areas

It is possible to use the freight elevator from Foyer F6 to Balcony 3/4

In addition, it is possible to open railings and thus lift pallets from the ground floor from Foyer F1 to Balcony 1, from Foyer F2 to Balcony 2 and from Foyer 6 to Balcony 3/4.

Please contact your contact at Bella Center for options, validation and offers.

### Air, heat/cooling

Foyer F0, F1, F2, F3 & F4:  
Foyers has a combination of radiant heating and air conditioning.  
Foyer F5:  
Foyer F5 has air conditioning.  
Foyer F6 & F7  
Foyer F6 & F7 has ventilation as well as partial heating from floor and ribbed pipes in the facade.

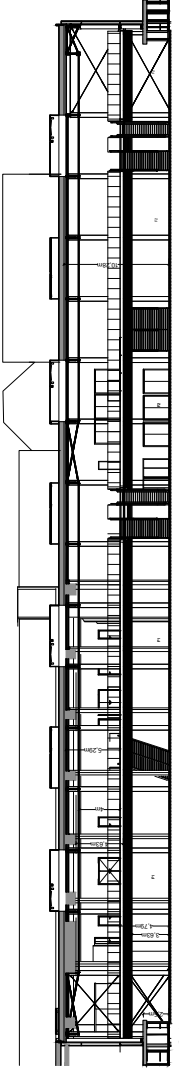
# Foyer F0-F4

## Foyer F0-F4

SCALE 1:750 - FORMAT A4



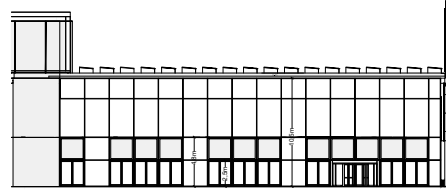
Snitt øst. Cross section east



99,8m

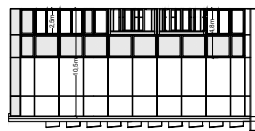


Snitt syd. Cross section south



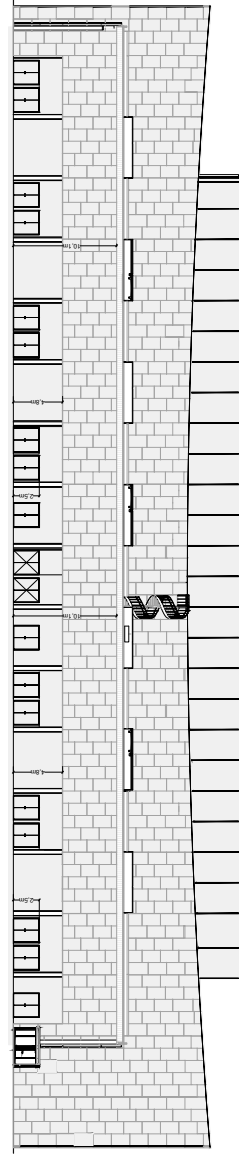
23m

Snitt nord. Cross section north



Snitt nord. Cross section north

Snitt vest. Cross section west



### DETAILS Gulv/Floor

1x1m GRID

BRANDTRYK Fire-alarm

SLANGEVINDER Fire-hose reel

SØJLER Pillars

VINDFANG Storm flap

1 SAL, kant 1st floor ledge

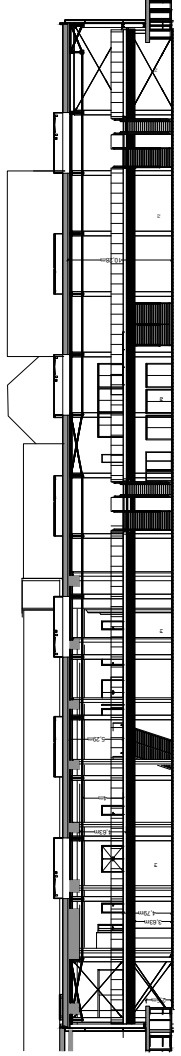
**Brann Restriksjons Zone: - Gul -**  
 Special terms, limitations or restrictions for building  
 Fire Restrictions Zone: - Yellow -  
 Special terms, limitations or restrictions for build up.  
 Fire Restrictions Zone: - Red -  
 Special terms, limitations or restrictions for build up.  
 Fire Restrictions Zone: - Red -  
 Special terms, limitations or restrictions for build up.



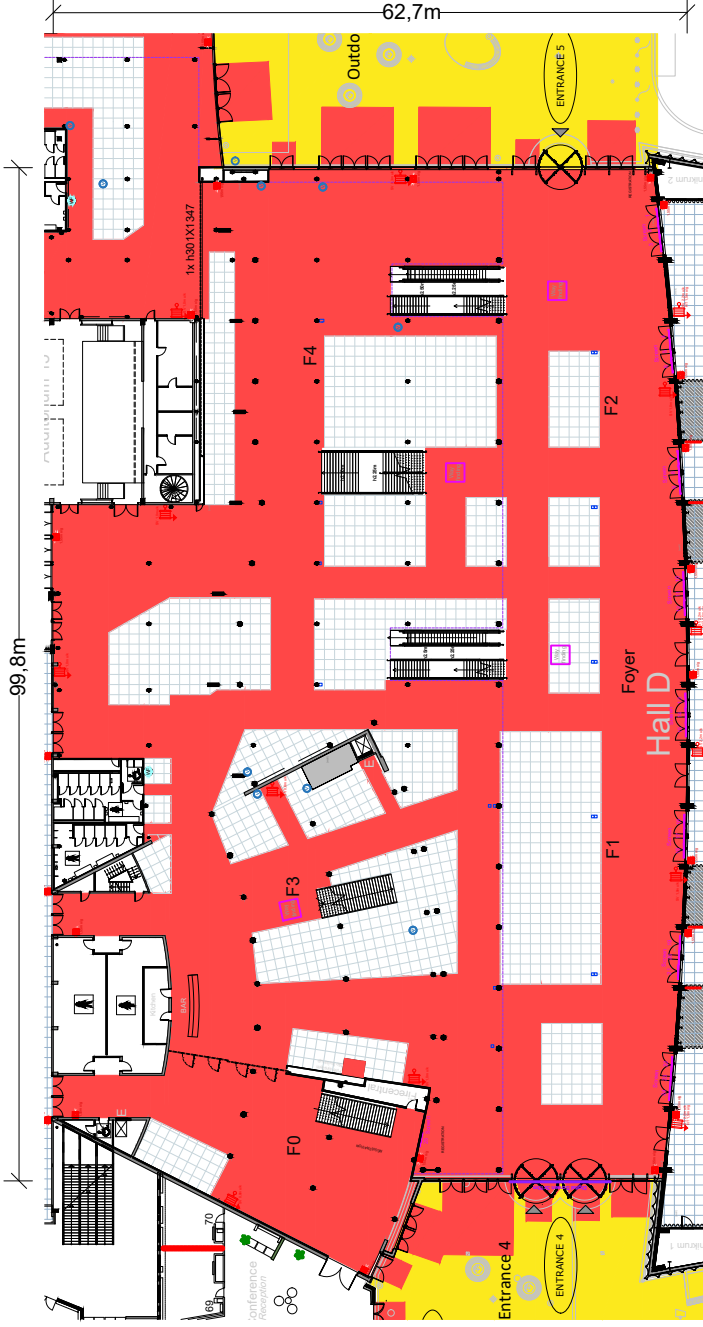
# Foyer F0-F4

## Foyer F0-F4

SCALE 1:750 - FORMAT A4



Snitt øst Cross section east



99,8m

62,7m

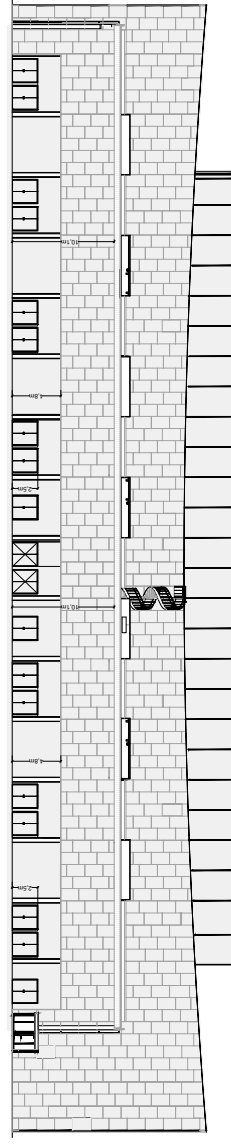
Snitt syd Cross section south

23m



Snitt nord Cross section north

Snitt vest Cross section west



**Layout when above 7000 pax.**

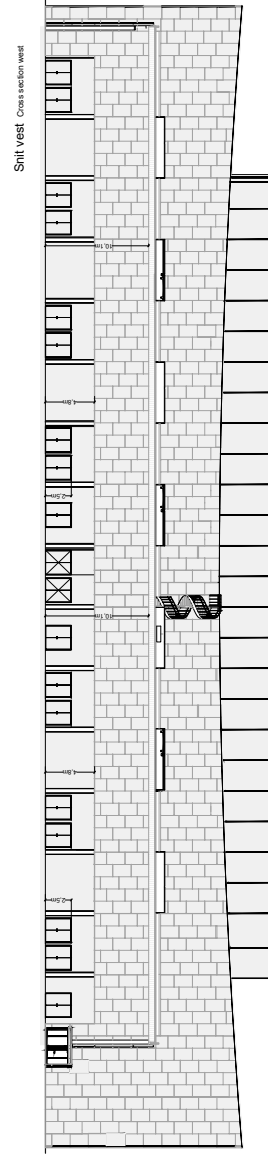
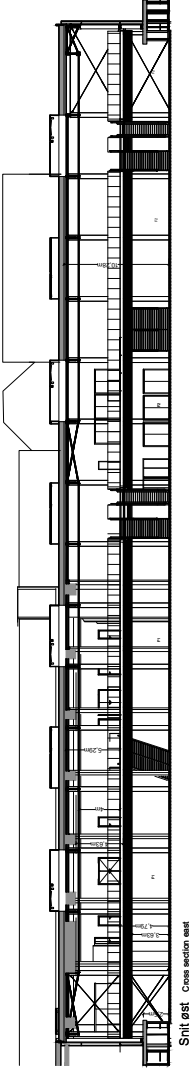
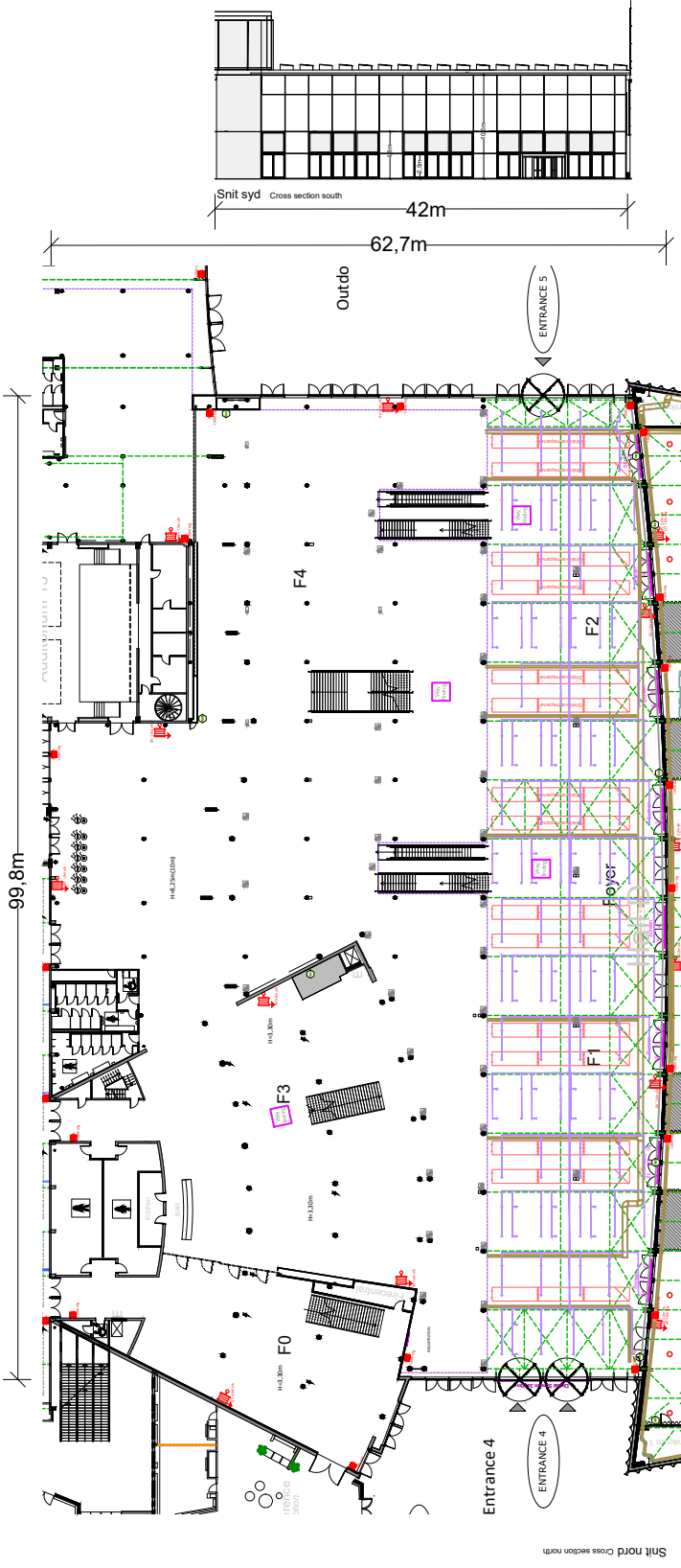
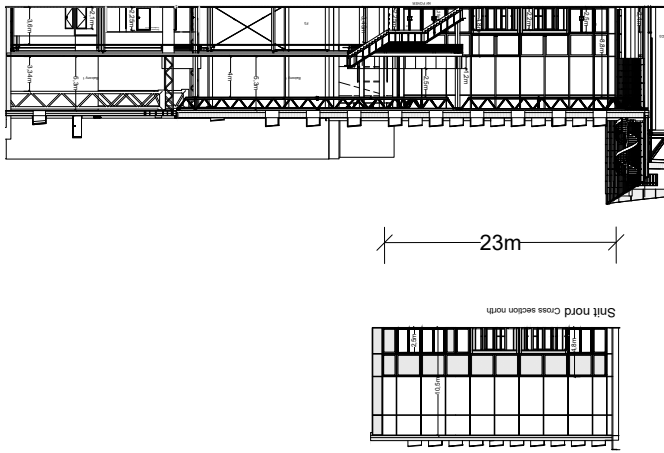
### DETAILS Gulv/Floor

- 1x1m GRID
- BRANDTRYK Fire-alarm
- SLANGEVINDER Fire-hose reel
- SØJLER Pillars
- VINDFANG Storm flap
- 1 SAL, kant 1st floor ledge

	<p><b>Brand Restriktions Zone: - Gul -</b>                  Særige veier, begrensninger eller restriksjoner for inngang.                  Event Design skal vurderes for vurdering av inngang (dette område).                  Fire alarm, brandtryk, slangevinder, søjler, vindfang.                  Spesielle tema, implanter og restriksjoner for build up.                  Event Design must be involved in the assessment of build up in these areas.</p>
	<p><b>Brand Restriktions Zone: - Rød -</b>                  Særige veier, begrensninger eller restriksjoner for inngang.                  Event Design skal vurderes for vurdering av inngang (dette område).                  Fire alarm, brandtryk, slangevinder, søjler, vindfang.                  Spesielle tema, implanter og restriksjoner for build up.                  Event Design must be involved in the assessment of build up in these areas.</p>

# Foyer F1-F2 Foyer F1-F2

SCALE 1:750 - FORMAT A4



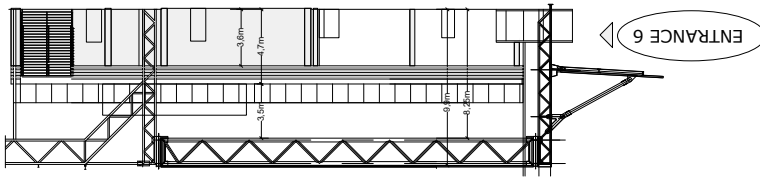
## DETAILS Loft/Ceiling

- 1x1m GRID
- SØJLER Pillars
- 1 SAL, kant 1st floor ledge
- SPRINKLING Sprinkling
- KABELKANAL Cable tray
- VENTILATION Ventilation
- STRÅLEVARME Radiant heat

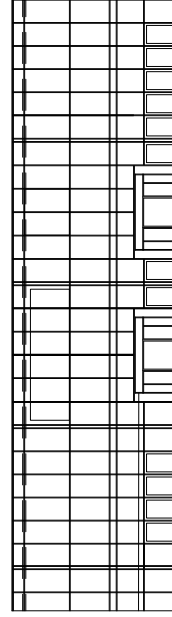


# Foyer F6/F7 Foyer F6/F7

SCALE 1:500 - FORMAT A4



Snit nord Cross section north



Facade øst. Facade east

## DETAILS Gulv/Floor

- 1x1m GRID
- BRANDTRYK Fire-alarm
- SLANGEVINDER Fire-hose reel
- 1 SAL, kant 1st floor ledge

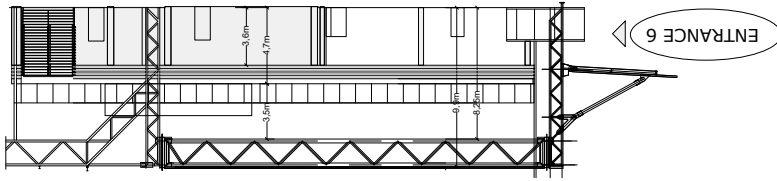
**Brand Restriktions Zone: - Gul -**  
 Særlige vilkår, begrænsninger eller restriktioner for indretning af indretning i dette område.  
**Fire Restriktions Zone: - Yellow -**  
 Special terms, limitations or restrictions for build up.  
 Event Design must be involved in the assessment of build up in these areas.

**Brand Restriktions Zone: - Red -**  
 Særlige vilkår, begrænsninger eller restriktioner for indretning af indretning i dette område.  
**Fire Restriktions Zone: - Red -**  
 Special terms, limitations or restrictions for build up.  
 Event Design must be involved in the assessment of build up in these areas.

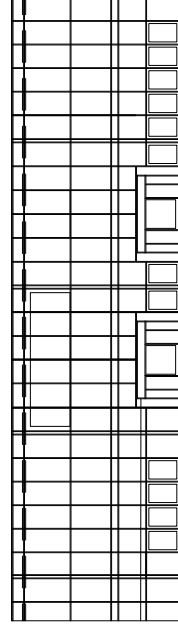
No build up permitted, however there may be individual exceptions and dispensations. Contact the Security Department for any dispensations.

# Foyer F6/F7 Foyer F6/F7

SCALE 1:500 - FORMAT A4



Snitt nord Cross section north



Facade øst Facade east

Layout when above 7000 pax.

### DETAILS Gulv/Floor

1x1m GRID

 BRANDTRYK  
Fire-alarm

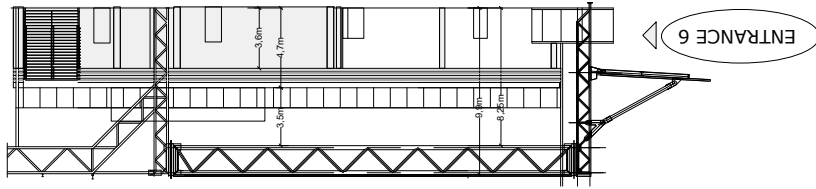
 SLANGE/INDER  
Fire-hose reel

1 SAL, kant  
1st floor ledge

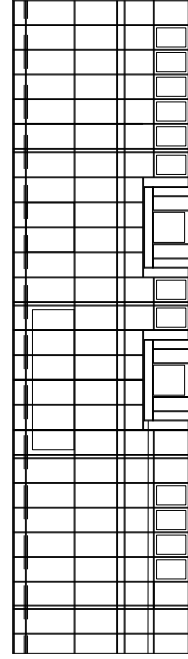
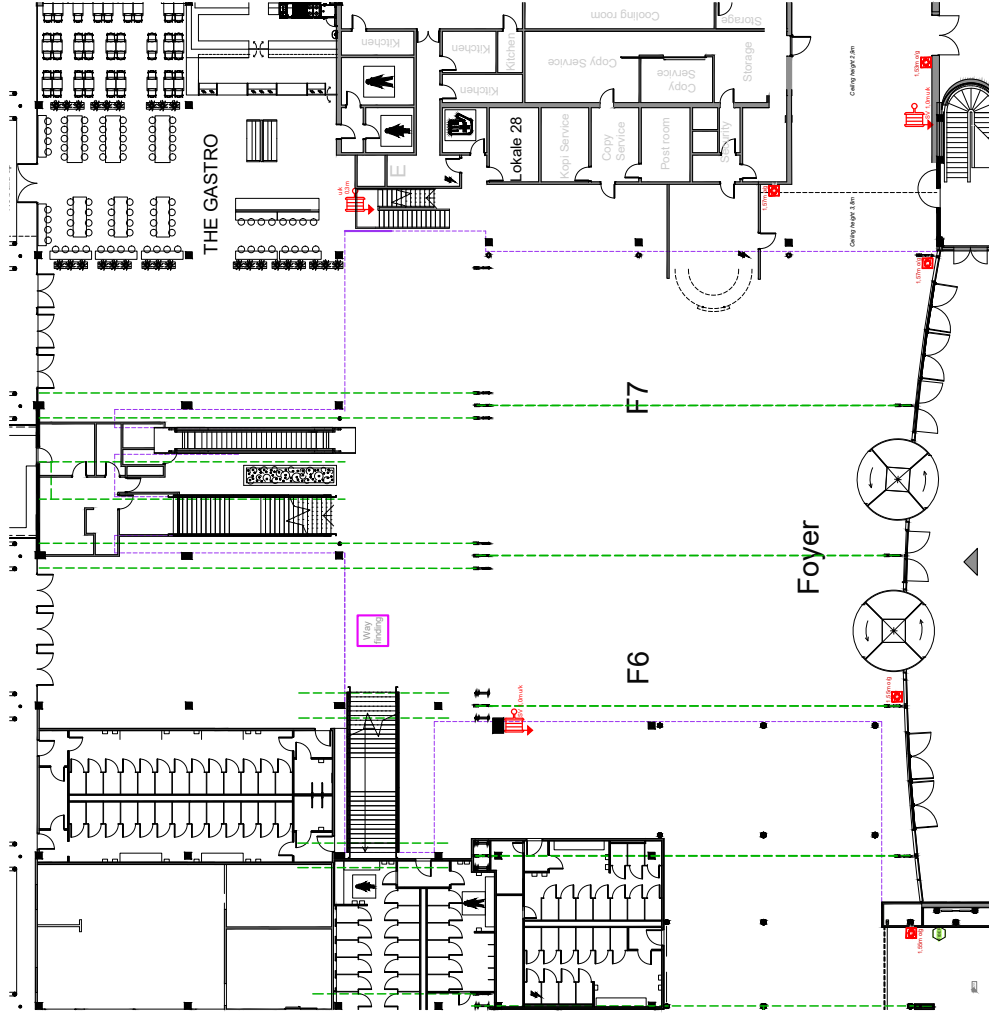
	<b>Brand Restrictions Zone - Gul - Yellow</b> Even Design skal indføres for vanding af loftet i disse områder Special terms, limitations or restrictions for build up Even Design must be involved in the assessment of build up in these areas
	<b>Fire Restrictions Zone - Red</b> Brand Restrictions Zone - Red Ingen indretninger skal der kan være enkeltevis undtagelser og dispensationer. Kontakt Sikkerhedsafdelingen for evt. dispensationer <b>Fire Restrictions Zone - Red</b> No build up permitted, however there may be individual exceptions and dispensations. Contact the Security Department for any dispensations

# Foyer F6/F7 Foyer F6/F7

SCALE 1:500 - FORMAT A4



Snit nord Cross section north



Facade øst Facade east

## DETAILS Loft/Ceiling

1x1m GRID  
1 SAL, kant 1st floor ledge

SLANGEVINDER Fire-hose reel

SPÆR Beam

SØJLE 40x40CM Pillar 40x40cm

SØJLE 40x80CM Pillar 40x80cm

SØJLE/SPÆR 2X Ø22CM - L=97CM Pillar/Beam 2x Ø22cm - L=97cm

# Balcony 1-5

## – en kort beskrivelse

### Adgang til balkon

På tegningen ses trapper og rulletrapper til 1 sal.

### Rummets frihøjder

Lofthøjde Balkon 1-2, underkant spær/armatur, 4,2-5,2 meter

Lofthøjde Balkon 3, underkant spær, 3,5 meter

Såfremt man har et specifikt krav til en lofthøjde i et givent område skal dette afklares med Bella Center

### Belysning Balcony 1-2

Balkonen er udstyret med en grundbelysning bestående af lyskilder monteret under spær

Lyskilde: Skinne armatur, Solar Light LQ60. LED 2500-4000 Lumen out.

3000 Kelvin, MacAdam SDCM 3. Driver: Dali.

### Belysning Balcony 3-4

Balkonen er udstyret med en grundbelysning bestående af lyskilder monteret i loftet.

Lyskilde: Pendel lampe, 4\*42 watt lysrør, 3000 kelvin, 200 lumen, styret af CTS tænd/sluk.

### Belysning Balcony 5

Balkon er udstyret med en grundbelysning af skinne armatur, LED 2500-4000 lumen, 3000 kelvin,

Der er nedhængte RGB lamper over kongressbro.

### Loft/Ophængning i loft

Wires: Der kan foretages lette ophæng, så som banner i spær.

Kontakt venligst Bella Center ved behov.

Bella Center forbeholder sig ret til evt. at tilpasse placering.

### Gulv

Gulvet er et flisebelagt betongulv. Flisen er primært en lys betonflise, afbrudt af sorte fliserækker

Gulvet kan klare følgende belastninger:

Balkongulvet kan klare en fladelast på 500 kg/m<sup>2</sup> samt en last fra palleløfter på 1000 kg.

Ved liftkørsel skal der anvendes personløftere på maks. 700 kg. ekskl. Fører

### Vinduer og mørklægning

Vinduerne kan ikke mørklægges.

### Vægge

Brandskab og slangevinder – må ikke tildækkes.

Væggene varierer i udtryk fra område til område på balkonen.

Nogle er udformet i beton, andre i gips.

### Elevatore

Der er følgende elevatore til stueetagen

Balkon 1 elevator (til F3)

Max belastning, 8 personer

Max belastning, 630 kg

Døråbning (bxh): 90 x 207 cm

Elevator dybde: 140 cm

Elevator bredde: 110 cm

Elevatortype: Personeelevator (ikke gods)

fortsættes på næste side...

## Balcony (1-5) – a brief description (1 of 2)

### Accessing Balcony

The drawing shows stairs and escalators to 1 floor.

### Ceiling height

Ceiling height in Balcony 1-2, lower edge of truss / light fittings, 4,2-5,2 m

Ceiling height Balcony 3, lower edge of truss, 3.5 meters

If you have a specific requirement for a ceiling height in a given area, please contact Bella Center for clarification.

### General lighting Balcony 1-2

Basic lighting is mounted under truss in the double-height room, and built into the lowered ceiling.

Light source: Rail luminaire, Solar Light LQ60. LED 2500-4000 Lumen out.

3000 Kelvin, MacAdam SDCM 3. Driver: Dali.

### General lighting Balcony 3-4

Basic lighting is mounted in the ceiling

Light source: Pendant, 4 \* 42 watt tubular lighting, 3000 kelvin, 200 lumens, controlled by CTS on / off.

### General lighting Balcony 5

Balcony is equipped with a basic illumination of rail fixture, LED 2500-4000 lumens, 3000 kelvin,

There are suspended RGB lamps above the congress bridge.

### Ceiling/ suspension in the ceiling

Wires: Light suspensions can be made, such as a banners.

Please contact Bella Center for options, validation and offers.

Bella Center reserves the right to adjust placement.

### Floor

The floor is a tiled concrete floor. The tile is primarily a light concrete tile, interrupted by black rows of tiles

The floor can withstand the following loads:

The balcony floor can handle a surface load of 500 kg pr. M<sup>2</sup>, as well as a load from pallet lifts of 1000 kg.

When driving a lift, use lifts with a max. of 700 kg excl. Driver

### Windows and blackout

The windows cannot be blacked out

### Walls

Fire cabinet and hose reel – must not be concealed.

The walls vary in expression from area to area. Some are designed in concrete, others in plaster

### Elevators

Following elevators to ground floor areas:

Balcony 1 elevator (to F3)

Max load, number 8 people

Max load, number 630 kg

Door opening (wxh): 90 x 207 cm

Elevator depth: 140 cm

Elevator width: 110 cm

Elevator type: Personnel elevator (not freight)

to be continued on the following page...

# Balcony 1-5

## – fortsat

### Elevatorer

Balkon 3 elevator (til F6),  
 Max belastning, 13 personer  
 Max belastning, 1000 kg  
 Døråbning (bxh): 100 x 210 cm  
 Elevator dybde: 210 cm  
 Elevator bredde: 110 cm  
 Elevator type: Personeelevator (ikke gods)

Balkon 4 elevator (gods) (til køkken F6)  
 Max belastning, 13 personer - Max belastning, 1000 kg  
 Døråbning (bxh): 120 x 200 cm (220cm indeni)  
 Elevator dybde: 240 cm - Elevator bredde: 120 cm  
 Elevator type: Godselevator

Aud. 10-12 backstage elevator (til F0)  
 Max belastning, 21 personer  
 Max belastning, 1600 kg  
 Døråbning (bxh): 110 x 204 cm  
 Elevator dybde: 260 cm  
 Elevator bredde: 140  
 Elevator type: Personeelevator (ikke gods)

### Gods til Balcony områder

Det er muligt at benytte godselevator fra Foyer F6 til Balkon 3/4 efter nærmere aftale med Bella center.  
 Desuden er der muligt, at åbne gelænder og dermed løfte paller med gaffeltruck fra stueetagen fra Foyer 1 til Balkon 1, fra Foyer F2 til Balkon 2 og fra Foyer F6 til Balkon 3. Åbning er 1,8m i bredden

### Luft, Varme / køling

Balkonerne har en kombination af strålevarme og aircondition.

## Balcony (1-5) – a brief description (2 of 2)

### Elevators

*Balcony 3 elevator (to F6)  
 Max load, 13 people  
 Max load, 1000 kg  
 Door opening (wxh): 100 x 210 cm  
 Elevator depth: 210 cm  
 Elevator width: 110 cm  
 Elevator type: Personnel elevator (not freight)*

*Balcony 4 elevator (freight) (to kitchen F6)  
 Max load, 13 people - Max load, 1000 kg  
 Door opening (wxh): 120 x 200 cm (220 inside)  
 Elevator depth: 240 cm - Elevator width: 120 cm  
 Elevator type: Freight elevator*

*Aud. 10-12 backstage elevator (to F0)  
 Max load, number 21 people  
 Max load, number 1600 kg  
 Door opening (wxh): 110 x 204 cm  
 Elevator depth: 260 cm  
 Elevator width: 140  
 Elevator type: Personnel elevator (not freight)*

### Goods to Balcony areas

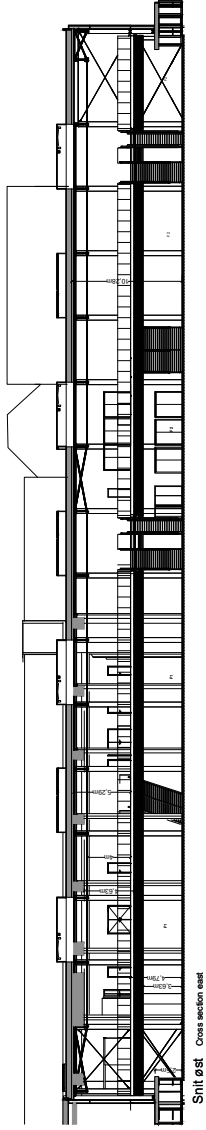
*It is possible to use the freight elevator from Foyer F6 to Balcony 3/4. In addition, it is possible to open railings and thus lift pallets with a forklift from the ground floor Foyer F1 to Balcony 1, from Foyer F2 to Balcony 2 and from Foyer F6 to Balcony 3. Please contact Bella Center for further coordination. Opening is 1.8m in width*

### Air, heat / cooling

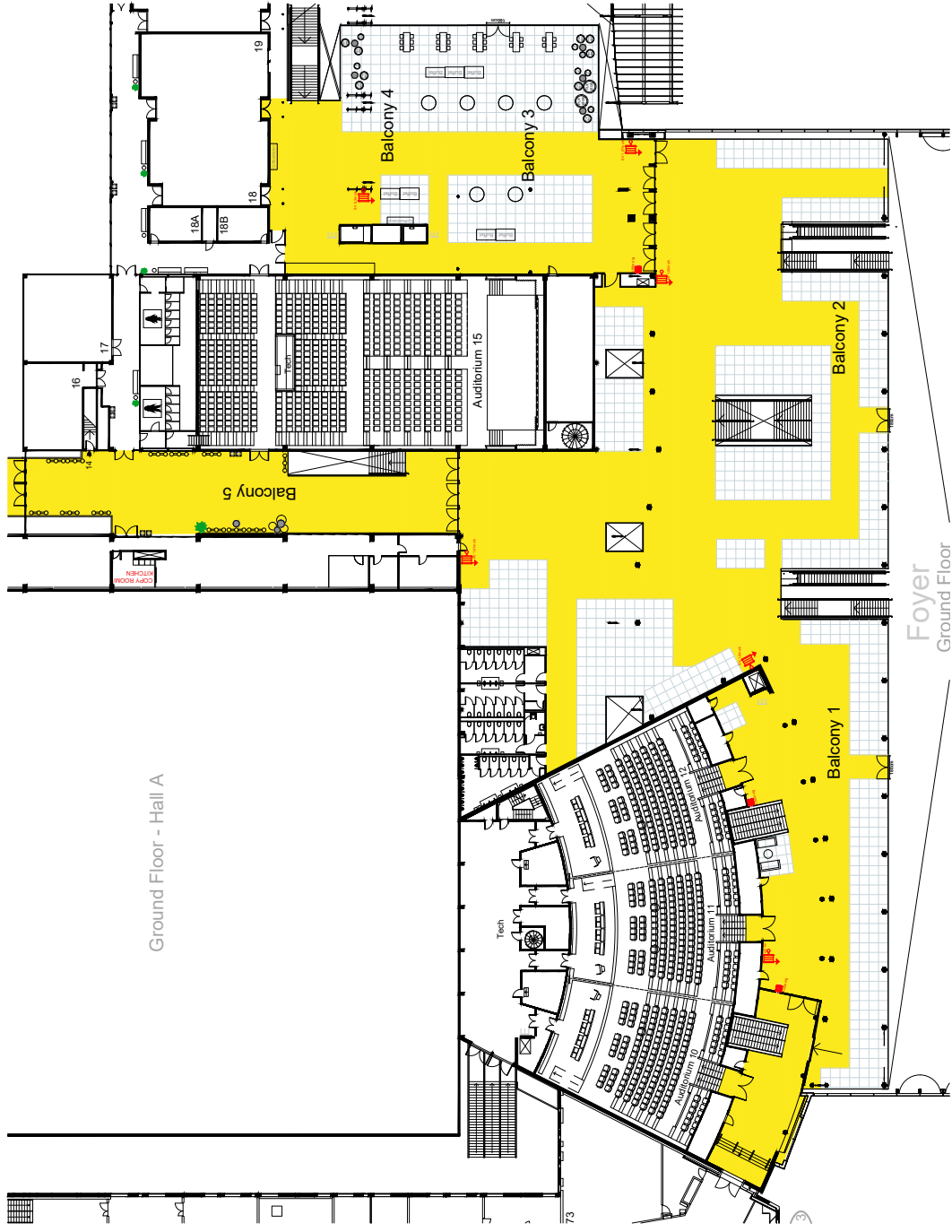
*The Balcony's has a combination of radiant heating and air conditioning.*

# 1 Sal Balcony 1-2 & 5 1st Floor Balcony 1-2 & 5

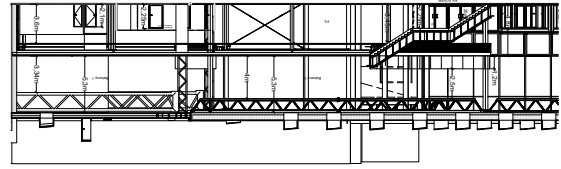
SCALE 1:750 - FORMAT A4



Snit øst Cross section east



Snit nord Cross section north



## DETAILS Gulv/Floor

1x1m GRID  
BRANDTRYK Fire-alarm

SLANGEVINDER Fire-hose reel

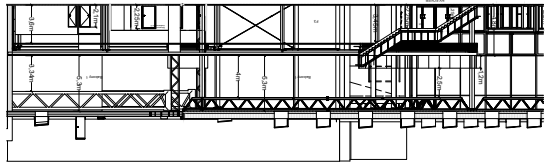
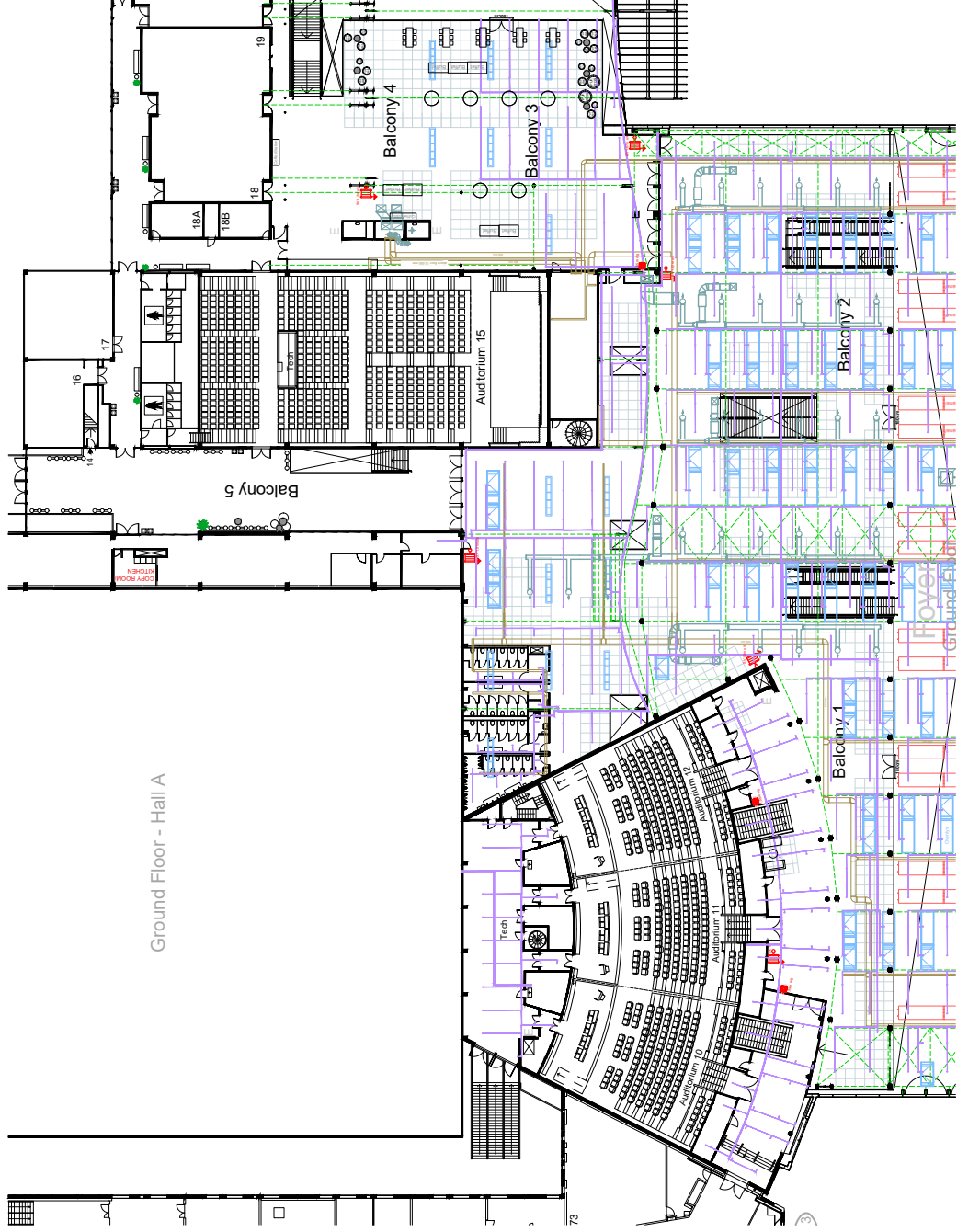
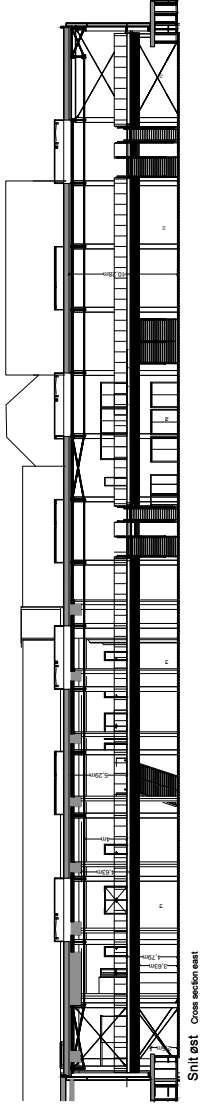
SØJLER Pillars

VINDFANG Storm flap

<p><b>Brand Restriktions Zone - Gul -</b> Svage vikar, begrænsninger eller restriktioner for indering. Event Design skal indlægges for vurdering af indering til disse områder. <b>Fire Restriktions Zone - Rødt -</b> Svage vikar, begrænsninger eller restriktioner for indering. Event Design skal indlægges for vurdering af indering til disse områder. <b>Brand Restriktions Zone - Rødt -</b> Ingen indering tilladt, der kan udgøre en sikkerhedsrisiko for de berørte personer. <b>Fire Restriktions Zone - Rødt -</b> Ingen indering tilladt, der kan udgøre en sikkerhedsrisiko for de berørte personer. No build up permitted, however there may be individual exceptions and dispensations. Contact the Security Department for any dispensations.</p>	<p><b>Brand Restriktions Zone - Rødt -</b> Svage vikar, begrænsninger eller restriktioner for indering. Event Design skal indlægges for vurdering af indering til disse områder. <b>Fire Restriktions Zone - Rødt -</b> Svage vikar, begrænsninger eller restriktioner for indering. Event Design skal indlægges for vurdering af indering til disse områder. <b>Brand Restriktions Zone - Rødt -</b> Ingen indering tilladt, der kan udgøre en sikkerhedsrisiko for de berørte personer. <b>Fire Restriktions Zone - Rødt -</b> Ingen indering tilladt, der kan udgøre en sikkerhedsrisiko for de berørte personer. No build up permitted, however there may be individual exceptions and dispensations. Contact the Security Department for any dispensations.</p>
---	--

# 1 Sal Balcony 1-2 & 5 1st Floor Balcony 1-2 & 5

SCALE 1:750 - FORMAT A4

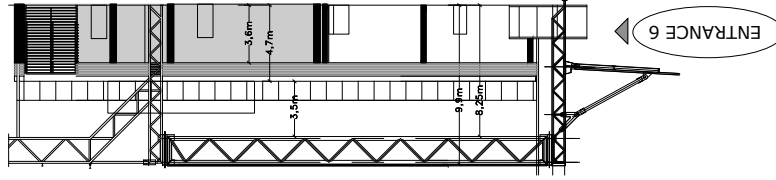


## DETAILS Loft/Ceiling

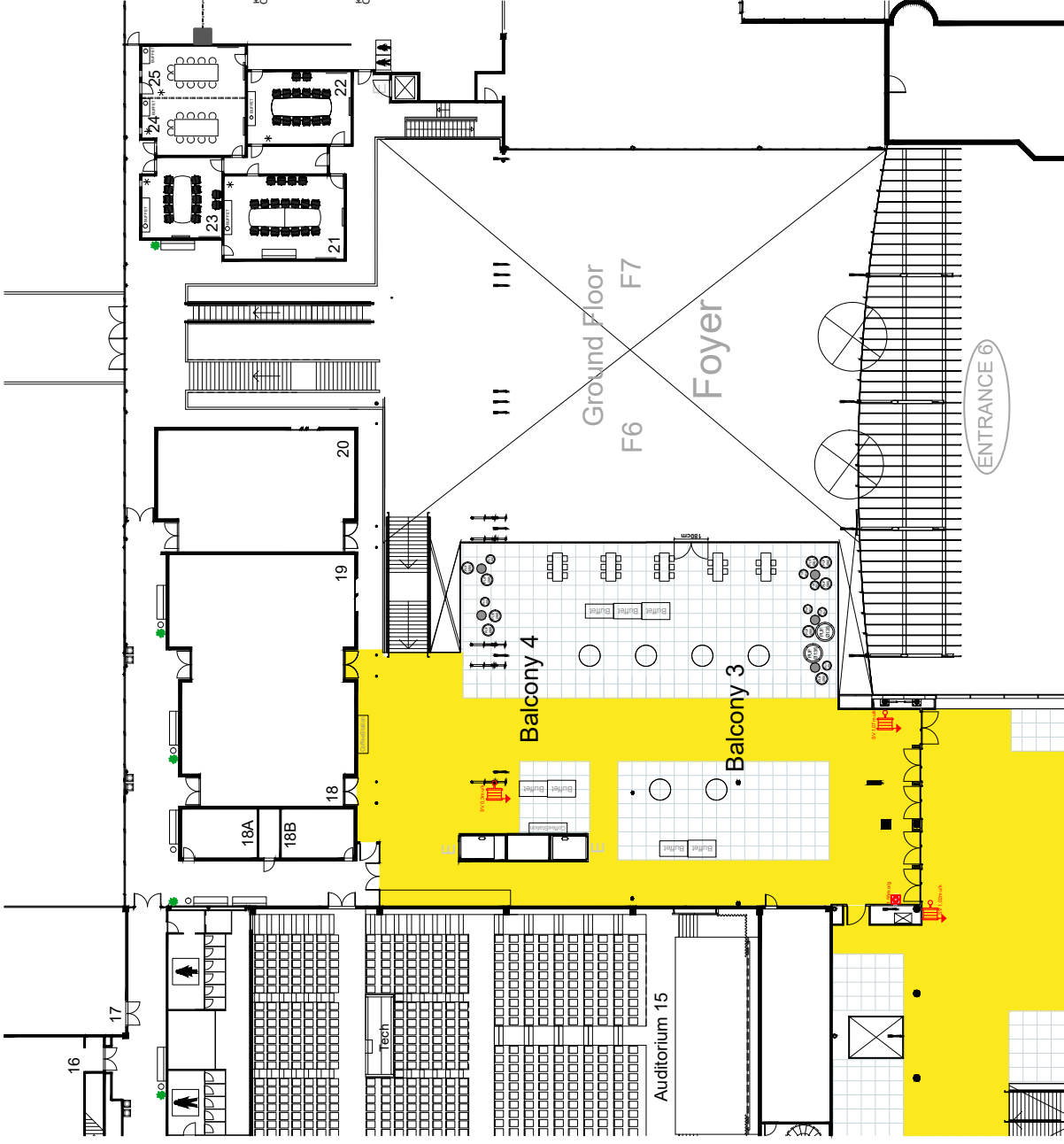
- 1x1m GRID (ground floor)
- SØJLER (Pillars)
- SPÆR (Beam)
- SPRINKLING (Sprinkling)
- KABELKANAL (Cable tray)
- VENTILATION (Ventilation)
- OVENLYSVINDUE (Skylight)
- STRÅLEVARME (Radiant heat)

# 1 Sal Balcony 3/4 1st Floor Balcony 3/4

SCALE 1:500 - FORMAT A4



Snit nord Cross section north



## DETAILS Gulv/Floor

1x1m  
GRID

BRANDTRYK  
Fire-alarm

SLANGEVINDER  
Fire-hose reel

**Brand Restriktions Zone - Gul -**  
Selvejg vektor, bopæningsgrænser eller restriktioner for indretning.  
Event Design skal indlægges for vurdering af indretning i disse områder.

**Fire Restriktions Zone - Yellow -**  
Event Design skal indlægges for vurdering af indretning i disse områder.  
Event Design skal indlægges for vurdering af indretning i disse områder.

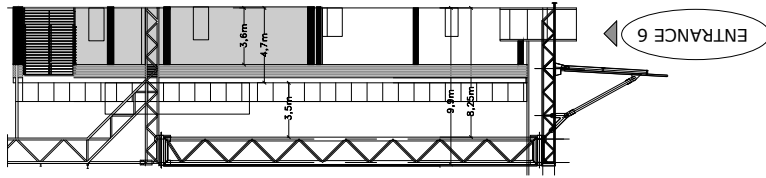
**Brand Restriktions Zone - Rød -**  
Ingen indretning tilladt, der kan dog være enkelte undtagelser og dispensationer.  
Kontakt Sikkerhedsafdelingen for evt. dispensationer.

**Fire Restriktions Zone - Rød -**  
Ingen indretning tilladt, der kan dog være enkelte undtagelser og dispensationer.  
Kontakt Sikkerhedsafdelingen for evt. dispensationer.

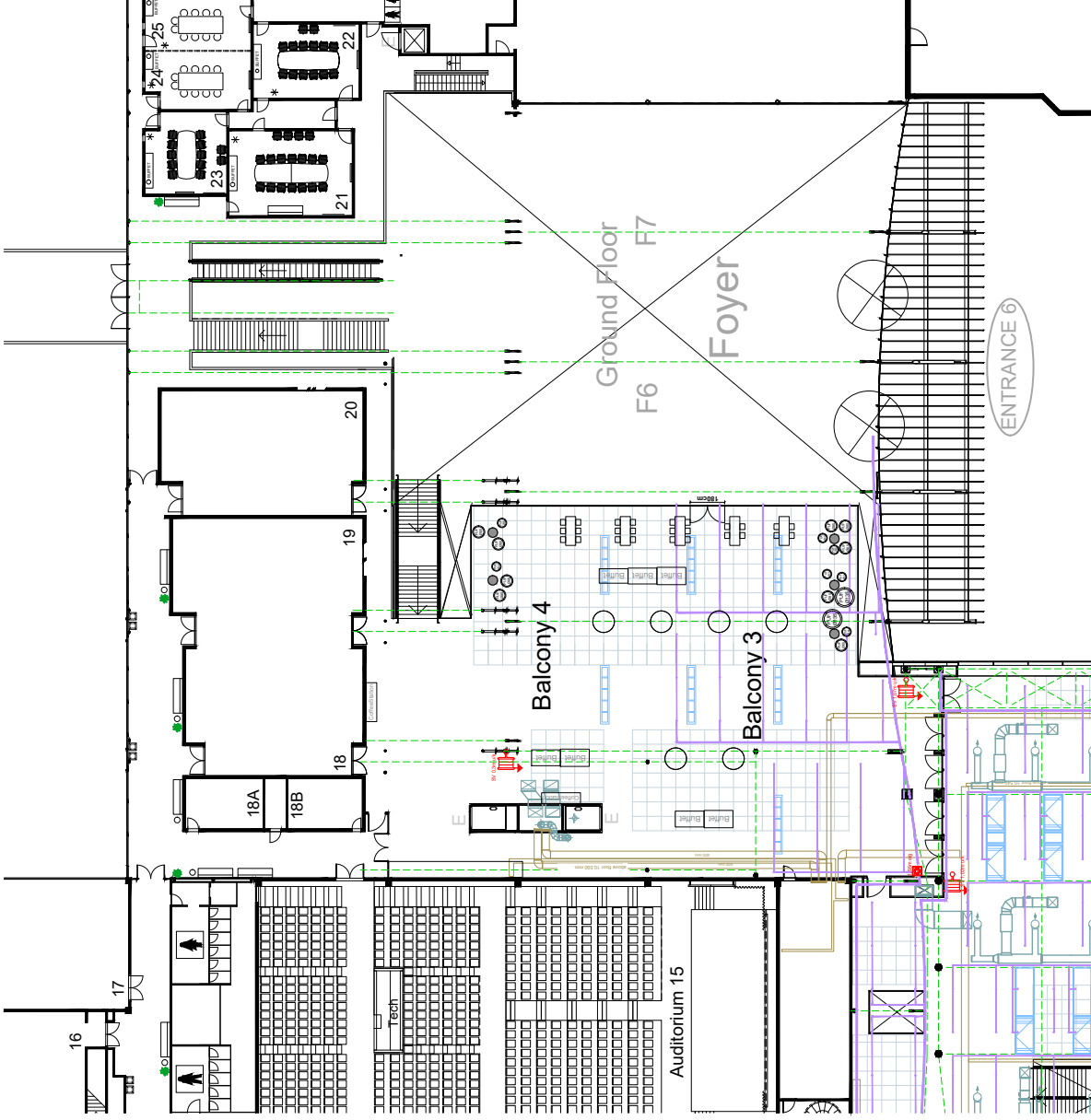


# 1 Sal Balcony 3/4 1st Floor Balcony 3/4

SCALE 1:500 - FORMAT A4



Snitt nord Cross section north



## DETAILS Loft/Ceiling

- 1x1m GRID (ground floor)
- SØJLER Pillars
- SPÆR Beam
- SPRINKLING Sprinkling
- KABELKANAL Cable tray
- VENTILATION Ventilation
- OVENLYSVINDUE Skylight
- STRÅLEVARME Radiant heat

# Outdoor area Entrance 3-6

Maksimal belastning på udendørs fliser ved Indgang 3-6:

Punktbelastning: 1.000 kg per m<sup>2</sup>, dog skal belastningen minimum fordeles på 20 x 20 cm

Køretøjer: Alm. personbiler og varevogne op til 3500kg.

*Maximum load for outdoor tiles by Entrance 3-6:*

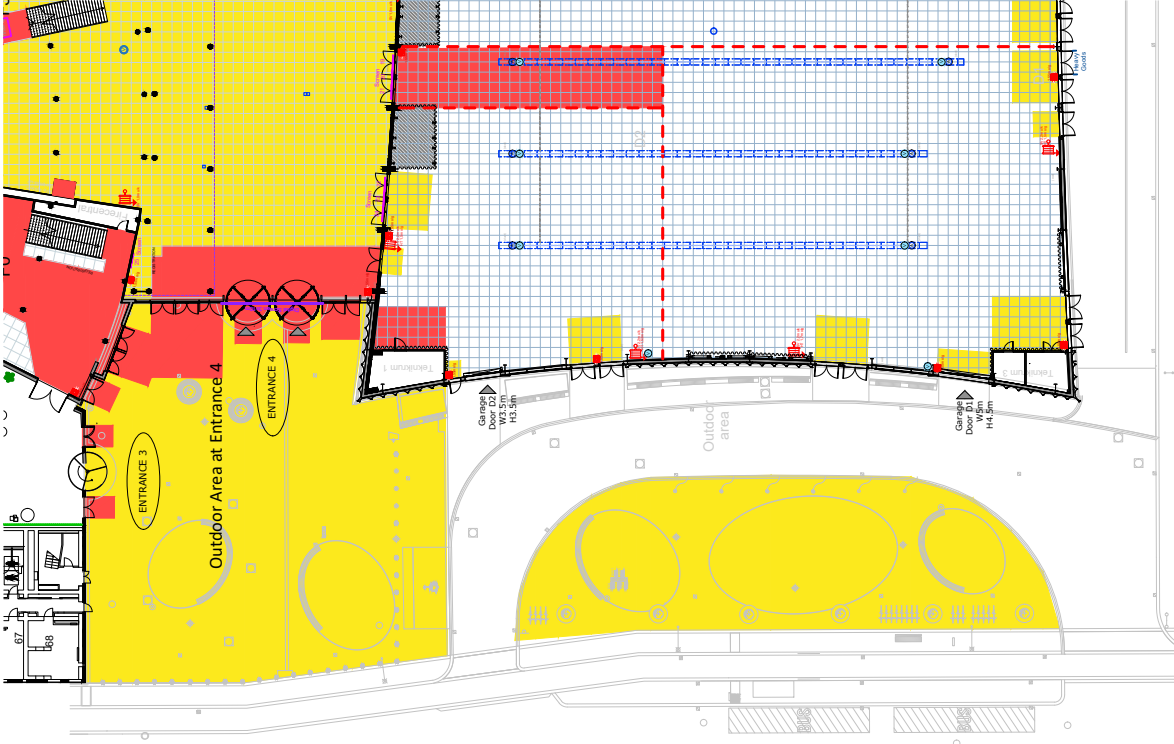
*Point load: 1,000 kg per m<sup>2</sup>, however, the load must be distributed across an area of minimum 20 x 20 cm*

*Vehicles: Ordinary cars and vans up to 3500kg.*

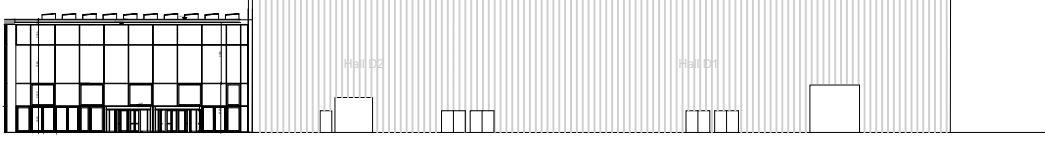
Indgang 3-4 udendørsområde  
**Entrance 3-4 outdoor area**  
 SCALE 1:750 - FORMAT A4



AC Bella Sky



Foyer F1



Facade syd Facade south

Center Boulevard

<p><b>Brand Restrictions Zone - Gul</b> - Special terms, limitations or restrictions for build up. Special terms, limitations or restrictions for build up. Special terms, limitations or restrictions for build up. Special terms, limitations or restrictions for build up. Special terms, limitations or restrictions for build up.</p>	<p><b>Brand Restrictions Zone - Rød</b> - Assessment of build up in these areas. Assessment of build up in these areas. Assessment of build up in these areas. Assessment of build up in these areas. Assessment of build up in these areas.</p>
--	--

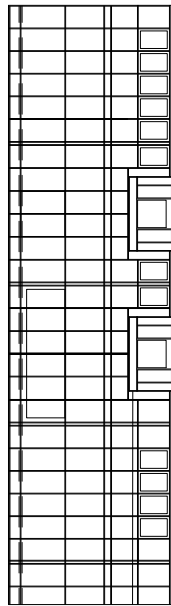
**DETAILS**

-  **LYSMAST**  
Light mast
-  **FLAGSTANG**  
Flagpole
-  **PULLERT**  
Bollard
-  **BRANDHANE**  
Fire hydrant
-  **AFFALDSSPAND**  
Waste bin
-  **CYKEL PARKERING**  
Bicycle parking

# Indgang 5-6 udendørsområde

## Entrance 5-6 outdoor area

SCALE 1:500 - FORMAT A4



**Brand Restrictions Zone - Gul** - Gul - lukkes for reaktion  
Event Design skal undersøge for vurdering af reaktions områder.  
**Fire Restrictions Zone - Yellow** -  
Special terms, limitations or restrictions for build up.  
**Brand Restrictions Zone - Red** - Lukkes af build up in these areas.  
Høje inderting takt, der kan dog være enkelte undtagelser og dispensationer.  
Kontakt Sikkerhedsdesignen for evt. dispensationer  
**Fire Restrictions Zone - Red** - Alle de individuelle receptioner og  
dispensationer. Contact the Security Department for any dispensations

Center Boulevard

**CYKEL PARKERING**  
Bicycle parking

**AFFALDSSPAND**  
Waste bin

**BRANDHANE**  
Fire hydrant

**PULLERT**  
Bollard

**FLAGSTANG**  
Flagpole

**LYSMAST**  
Light mast

### DETAILS



LYSMAST  
Light mast



FLAGSTANG  
Flagpole



PULLERT  
Bollard



AFFALDSSPAND  
Waste bin



CYKEL PARKERING  
Bicycle parking



## EXHIBITOR TERMS

- Please share with your suppliers and other persons relevant for your stand -

[Link to this document \(Exhibitor Terms\) on our website](#)

Please read the following exhibitor terms and conditions. If you have any questions, please do not hesitate to get in touch. We look forward to working together!

### INVOICING

Bella Center Copenhagen invoices services and supplies which have been ordered for stand build-up, stand furnishing, serving etc. prior to the event.

Please note that payment must be made before the start of the event. Remember that, as an exhibitor, you are responsible for payment – regardless of whether the deliveries have been ordered by you or your supplier.

Prices cover the duration of the event (max. five days and are exclusive of 25% VAT).

We ask all of our customers to provide a VAT/central business register (CVR) number. A company registration number can also be used if your company does not have a VAT/CVR number. This information must be submitted when placing an order.

Issued invoices may be revised after the invoice has been issued against a surcharge of DKK 500 per invoice.

if Bella Center Copenhagen needs to be registered as a supplier or if there is a need for any other document such as company information or code of conduct, please provide the documents to be filled prior to event start date. Bella Center Copenhagen cannot fulfill these requirements after the contracted work has been carried out.

### DELIVERIES

Deliveries which have been ordered prior to the deadline via Bella Center Copenhagen will be ready for the first stand build-up day.

If you place an order after the deadline, it may be necessary to pay a surcharge (see the event specific guidelines). Therefore, it is a good idea to place orders in due time as we cannot guarantee that orders received after deadline can be processed.

Our deadline is usually four weeks before the event starts to ensure that we can provide all the services on time and at the agreed price.

Also, if you want to cancel an order, remember to do so in due time. An order becomes binding 21 days before the event starts.

If your deliveries need to be made to a particular location on the stand, this must be marked on a detailed drawing submitted with the order. Furniture is always placed arbitrarily on the stand.



## STAND BUILD-UP



We hope that you will do everything you can to help us look after the floors, stand walls, signage and other stand material. It is therefore not permitted to screw, glue, paint or in any other way cause damage to our buildings or equipment.

If you unexpectedly damage our interiors/building components, we will be obliged to invoice you accordingly.

Only Bella Center Copenhagen's staff is permitted to affix wires, mount/dismount Bella Center Copenhagen's walls, fascia boards, spots etc. For safety reasons, at least two wires must be ordered for setting up banners, signs or similar. For safety reasons, it is forbidden to load the wires. If you need to lift equipment, you should use chain blocks in rigging points.

Bella Center Copenhagen must establish the rigging point, but you can use it to mount your own chain block.

**>> Do you have questions or need assistance with stand build-up?  
- Please contact Bella Center Copenhagen and we will find a solution. <<**

Please see the event specific guidelines for information on the allowed build-up height, as well as other information for the stand build-up.

If you need to use sticking material on Bella Center Copenhagen's stand walls, floors or fascia boards, you must use DuploColl 43102, Tesa tape 4964 or TESA Power-Strips, as these can be removed easily without leaving marks/glue residue. Onsite, you can purchase DuploColl as well as wall hooks for lightweight items such as poster frames. Please note that if you fail to remove sticking material residues from stand surfaces, floors etc. on departure, you will be invoiced for cleaning.

If you fail to remove stand materials and own carpets from the stand, we will ensure that they are removed and environmentally sorted. You may be invoiced for this service.

If you have a general room or a meeting or conference room for more than 49 persons, it is necessary to establish two exit doors at opposite ends.

**Important! Please read the Fire section – it contains further information in relation to the official requirements!**



### *Elevated stands, high podiums or structures with heavy goods*

If you want to build a two-storey stand, and the stand does not have a certification yet, the construction must be authorized by the Construction Authorities. The same applies to structures with heavy goods. You must apply via Bella Center Copenhagen (application must contain technical drawings, any photographic material and information on the construction materials, with a fire certification of those if available). The material must be submitted together by the deadline, which is 12 weeks before the event start. There are no costs connected to the application to the Construction Authorities.

Please note that two-storey stands must always have minimum one stairway exit with a minimum width of 1.3 m.

49 persons are allowed to be on the top level (1<sup>st</sup> floor). The exhibitor must display signs on the stand advising this.

If you plan podium constructions that are higher than 1m, you must follow the same application process as above, unless the constructor has a pre-approved certification of the desired podium construction.



### *Regulations regarding raised floor construction*

According to Danish building legislation, a ramp is required for height differences exceeding 2.5 cm in floor structures. This ensures accessibility and safety for all users, promoting inclusion and mobility- in building design.

The ramp should have a 1:20 drop (equivalent to 5 cm per meter) and a minimum width of 77 cm to allow sufficient space for maneuvering. Additionally, health and safety protocols require clear marking at the edge of elevated floor areas to prevent fall injuries.



### *Specially built stands*

Do you have any special wishes regarding how your stand should be built? Please contact Bella Center Copenhagen so we can meet your needs while adhering to the rules for stand build-up.

## INSURANCE / LIABILITY

Protect yourself against theft and accidents! We recommend that you take out the necessary insurance coverage for your own property, as this will not be covered by Bella Center Copenhagen's insurance.

*Bella Center Copenhagen cannot be held liable for exhibitors' property (private or company property), even in the case of simple theft.*



## GOODS DISPATCH

If you need to have packages and goods sent to Bella Center Copenhagen, you have the following options:

### *Packages & goods arriving before stand build-up:*

As our storage capacity is limited, you should be aware that our forwarder DSV receives and stores your package/goods and will deliver them directly to you on the stand once you arrive. You will be invoiced for this service by DSV.

### *Packages & goods arriving during stand build-up and event:*

Here, you must ensure that couriers are supplied with the correct name of the event, company name, telephone number, stand number, and you also need to ensure that you are on the stand to receive and sign for deliveries. If not, couriers are referred to DSV, which receives and stores your package/goods and deliver them directly to you on the stand. You will be invoiced for this service by DSV.

It is possible to bring your own forwarder. Bella Center Copenhagen recommends that your own freight forwarder cooperates with DSV.

For information about additional transport services, logistics services, delivery address and prices, please contact DSV at [expo@dk.dsv.com](mailto:expo@dk.dsv.com)

## GOOD NEIGHBOURLY RELATIONS

- Make sure that your stand build-up and exhibition materials remain within the stand area during the exhibition for the sake of cleaning, escape routes etc.
- Avoid lights, sounds, smells etc. which can impact your neighbours. This also applies to the distribution of products/food which require extra cleaning of the aisles.
- If you will be playing music/showing films, then remember to inform your neighbours about which sound demos you will be carrying out, as well as when and for how long.
- Dogs, cats and other pets are not permitted on Bella Center Copenhagen's premises unless otherwise stated or agreed with Bella Center Copenhagen.

### VISA AND WORKING PERMITS

Everyone working at Bella Center Copenhagen must comply with the rules of the Danish Working Environment Authority at: [www.arbejdstilsynet.dk](http://www.arbejdstilsynet.dk) (tel.: +45 70 12 12 88).

Please remember that labour force from non-EU countries must apply for residence and work permits with the Ministry of Foreign Affairs before starting the work at Bella Center Copenhagen.

For work permits please apply 2 months prior to arrival at <https://nydanmark.dk/>

Please remember to register all work by foreign workers in Denmark via Register of Foreign Service Providers (RUT) unless [these exceptions](#) apply."

## POWER AND ELECTRICAL INSTALLATIONS

### Power

24-hour power will be connected from the first stand build-up day and up to and including the day after the end of the exhibition at 12:00. If you need a power connection for longer, this can be arranged.

### Electrical installations

Your electrical installations on your stand comply with the standard EN 50 110 on operation of electrical installations. It means, among others, that we have made a risk assessment in order to execute the work safely. Please be aware that your machines and utility items must be earthed.

Be careful not to obstruct the distribution boards, as Bella Center Copenhagen's staff need to have access to them. Please ask if you are in doubt.

## FOOD & BEVERAGE

Bella Center Copenhagen has exclusive rights to serve food and drinks in the exhibition area, and as an exhibitor you must therefore not sell food or drinks on your stand. If you want to serve food and beverage samples on your stand, we kindly ask you to make an agreement with Bella Center Copenhagen beforehand.

This policy is due to the fact that Bella Center Copenhagen's F&B department is responsible for ensuring compliance with the environmental and hygiene laws and regulations of the Danish authorities.

If you contact Bella Center Copenhagen in advance, we can approve your company, in order to comply with the regulations of the Danish authorities.

At food fairs, it is certainly possible to serve samples of your own products, as long as you comply with the requirements of the existing Danish laws on food and beverages, also regarding waste disposal.

If the food is produced in advance, you must comply with the three-hour rule for unrefrigerated storage (once the food has been taken out of a refrigerator, it must be discarded after three hours). If food needs to be produced on the stand, it is necessary to have running hot and cold water, a sink, and refrigeration facilities for storing raw ingredients. In general, you must comply with the existing Danish laws on food and beverages.

If you want to prepare food on your stand using a stove or gas hobs, you must ensure there is a 5kg CO<sup>2</sup> fire extinguisher and fire blanket available.

If you are in doubt about the rules, please do not hesitate to contact Bella Center Copenhagen.

## ORGANIC WASTE



If you have organic waste on your stand, it must be disposed of in food waste containers, which you can rent from Bella Center Copenhagen. The cleaning of the food waste container and the disposal of the food waste are included in the rental.

You should make the following considerations in combination with organic waste: Volume, handling, storage, overview over deliveries and disposal (especially cadavers), cleaning before, during and after the event.

## VEHICLES IN THE HALLS, UNLOADING AND PARKING



- Remember before arrival to check the event specific guidelines on rules regarding access during build-up and dismantling.
- During build-up and dismantling it is only permitted to drive with your vehicle to the stand, if it is stated in the event specific guidelines.
- After unloading, you must leave the area completely.
- During breakdown, goods vehicles and transport carts are only allowed to access the halls approx. one hour after the exhibition has closed.
- If you have large and heavy items for your stand, this should be advised to Bella Center Copenhagen before the exhibition. Then, if necessary, transportation of your items into the halls before stand build-up commences can be arranged.
- Aisles must be cleared to ensure free passage for others.
- You are responsible for unloading items and transporting them to the stand, but it is possible to order truck assistance from the appointed freight forwarder in advance. The appointed freight forwarder will also store empty cardboard boxes etc. during the event so they do not get in your way. Please note that empty packaging material placed in the aisles will be removed by the appointed freight forwarder on the last build-up day at closing time so the aisles can be cleaned. The appointed freight forwarder will invoice you for this service. Empty packaging material will not be removed from your stand unless this is agreed in advance.

## MUSIC, SOUND AND FILMS



If you wish to play music on your stand, remember to inform Koda and Gramex. Visit [www.koda.dk](http://www.koda.dk) or [www.gramex.dk](http://www.gramex.dk) for more information about the rules. Please be aware that this is your responsibility.

If you would like to show films/videos or parts thereof, this also requires the permission of the copyright holders. For more information, visit the Motion Picture Licensing Company at <https://www.mplc.dk/page/om-paraplylicensen>.

If you require a mixing console on your stand, you must have a hand-held fire extinguisher (CO<sup>2</sup> extinguisher) available.

## FIRE



*The Danish Emergency Management Act (Beredskabsloven) paragraph 71 states:*

The following shall be punishable by a fine

1. Any individual who fails to exercise proper caution in the use of fire, light, matches, ash, inflammable substances, and any other substances or articles which may cause or contribute to fire, or who fails to ensure that persons belonging to the household or enterprise of the individual exercise such caution; and
2. Any individual who owns or makes use of electrical devices or other light, heating, power plant or machinery, which may cause or contribute to fire, or who makes use of such systems or devices or allows them to be used, regardless of them not being in good condition.

It is therefore extremely important that you ensure that your stand complies with the following:

- Coffee-makers, electric kettles, photocopiers/printers, refrigerators and other electrical appliances in backrooms require that you mount a CO<sup>2</sup> hand-held fire extinguisher (min. 5 kg) which is visible and accessible.
- Bioethanol stoves must be installed according to the supplier's instructions and safety specifications. It is not permitted to carry out any type of fuel decanting within exhibition opening hours. Moreover, it is not permitted to store any additional fuel on the stand, and the stove's combustion chamber must be covered at closing time if the stove still contains fuel. Appropriate fire extinguishing equipment must be available on the stand.
- Nothing containing inflammable or explosive liquids may be brought into the halls, unless agreed with Bella Center Copenhagen (see also the section about Gas storage further down in this document).
- Candles are allowed with the following conditions: Candles must be secured against over tipping and be placed in solid candlesticks on non-flammable surfaces. Candles must not be placed near textiles, and they must not drip. If they pose a safety hazard, Bella Center Copenhagen may require that the candles are blown out and/or removed from the stand.
- All fire technical installations such as emergency exits, fire hoses, fire cabinets, call points and fire alarms must not be hidden, obstructed or covered with decorations. All equipment for firefighting placed in the hall must always be visible and fully accessible.
- Empty flammable packaging and stock must be continually removed from the hall.
- Use of smoke or pyro must be arranged with Bella Center Copenhagen before arrival. A fire guard may be required, which will be subject to a fee.





### Covered stands

As the halls have an automatic sprinkler system, there are limits to how you can cover your stand.

All conditions regarding covering of stands and special areas, such as vehicles, tents and containers, must be agreed with Bella Center Copenhagen. We reserve the right to prohibit covering if it conflicts with the fire strategy in the hall. Therefore, you must inform about the type of covering, size and materials.

If the fire strategical conditions allow it, you may cover your stand. Coverings of more than 9m<sup>2</sup> should be constructed with water permeable materials. You can also construct a firm covering, such as wooden panels, as long as the total firm covering does not extend more than 40% of the covered area.

If you have a firm covering of more than 9m<sup>2</sup>, you are obliged to establish extra sprinklers on the stand. Sprinkling must be established according to the description about sprinkling on the stand (please see below in this section).

You are allowed to build two-storey stands, subject to the guidelines for layout and use of the halls. Please see the section on elevated stands earlier in this document.

If you want to build a two-storey stand, you are obliged to establish extra sprinklers on the stand. Sprinkling must be established according to the description about sprinkling on the stand (please see below in this section).

On special stands, for example vehicles, tents or containers of more than 9m<sup>2</sup>, where it is not possible to establish extra sprinklers, a dedicated fire strategy for the stand must be agreed with Bella Center Copenhagen. The fire strategy contains handheld fire-fighting equipment, fire dedicated surveillance and intervention procedures on the stand, which will induce security related costs for you as an exhibitor.

Dispensations for the above can be given only by Bella Center Copenhagen based on a specific evaluation of the stand, area and present risks. You must apply for a dispensation eight weeks before the event start, as Bella Center Copenhagen may need to apply to the authorities.

The sprinkler system can be installed by Bella Center Copenhagen, and we are happy to provide a non-binding quotation for the work. Connection to main sprinkler pipes must always be undertaken by Bella Center Copenhagen. The rest of the sprinkler system may be installed by Bella Center Copenhagen or another authorized technician (according to SKAFOR's regulations).



### Materials

According to the Regulation on operational requirements (Bekendtgørelsen om driftsmæssige forskrifter) 14.6/14.7, all decoration material must be safeguarded as class B.

However, certain items can be impregnated, for example artificial flowers. In general, materials must not be more flammable than wood.

If you need wood floors on your stand, please note that it must not be laid like a grating with gaps or with underlying cavities.

Bella Center Copenhagen can always demand documentation that inflammable materials are sufficiently impregnated/secured against fire, including testing the fire resistance of the material.



### Carpets must have one of the following approvals:

- "Class G flooring as in DS 1063.2" – in accordance with Danish Building Regulations '95, chapter 6.11.1, section 5
- Class Dfl – s1 flooring is classified according to EN 13501 Fire classification of construction products and building elements.
- NT Fire 007 (Scandinavian approval)



### Furniture must have one of the following approvals:

- Minimum class D-s2,d2 [class B materials]
- Upholstered furniture must meet the demands for ignition in EN 1021-1 [DS/EN-1021-1, 2014]

### WIRELESS NETWORK



If you want to establish your own wireless network on the stand, it must be approved by Bella Center Copenhagen IT. IT connections supplied by Bella Center Copenhagen must not be shared with a third party.

## Gas storage

Gas storage must meet the demands and guidelines described in the document "Guideline for Storage and Use of Gas", which is based on the National Gas Storage regulations.

Please contact Bella Center Copenhagen, if you need the document "Guideline for Storage and Use of Gas".

If you need gas storage on the stand, you must apply for permission from Bella Center Copenhagen at least eight weeks before the event start. The application must as a minimum include information on gas type, volume, handling and existing safety protocols of the gas storage.

Bella Center Copenhagen is obliged to carry out a formal application for permission to have the gas storage in the building, just as Bella Center Copenhagen is obliged to hand out a complete overview to the fire department showing areas with gas storage during the event. This applies for all types of gas storage.

The exhibitor, who has permission for gas storage on the stand, is always obliged to fulfill all demands and guidelines as described in the document "Guideline for Storage and Use of Gas". This includes ensuring that the gas is stored safely during and outside event opening hours, that there is sufficient extinguishing equipment, and that there is accurate signage regarding the gas storage.

Outside of the opening hours of the event, gas storage must always be kept in suitable cages, boxes, cabinets or trailers outside the building. You must provide this yourself, alternatively Bella Center Copenhagen rent out cabinets. The location of your gas storage is appointed by Bella Center Copenhagen.

Please contact Bella Center Copenhagen in order to enter into an agreement regarding your gas storage.

## Vehicles

If you would like to have a vehicle on your stand for decoration purposes, you must submit an application to Bella Center Copenhagen with a description and drawing of the location. The deadline is eight weeks before the event start.

The following guidelines for vehicles indoors apply:

### *Petrol/diesel-powered vehicles:*

- The tank may contain max. 5 liters of fuel.
- The fuel cap must be locked.
- The battery must be disconnected.
- If more than one vehicle on the stand area, a minimum of 3m distance between the vehicles is required.
- The keys must be handed to Bella Center Copenhagen's security staff at night.

### *Electric vehicles:*

You must be able to produce documentation which can be used to approve the following:

- The battery must be disconnected.
- Factory-manufactured electric vehicles must be fitted with a mechanical, cable-deactivated parking brake.
- The gearbox must also be mechanically locked by a steel latch that engages with the gearbox.
- The key must be removed from the ignition system.
- The handbrake must be activated.

### *Hydrogen and natural gas vehicles:*

Unfortunately, we cannot allow hydrogen vehicles on the stand. Natural gas vehicles can be accepted on the usual conditions which apply for petrol and diesel vehicles. However, all pressure must be removed from the gas tank.

### *Additional safety considerations:*

Vehicles are not permitted to be turned on indoors, except when the vehicle is being parked or removed from the stand. You are not allowed to turn on the vehicle for presentations etc. without permission from Bella Center Copenhagen.

Vehicles presentations must be approved by Bella Center Copenhagen and will require a suitable roadway with enough shielding off to spectators and materials

## **GDPR Policy**

As we continue our commitment to transparency and following EU-regulation, we wish to inform you of our [Personal Data Policy](#) at Bellagroup.

