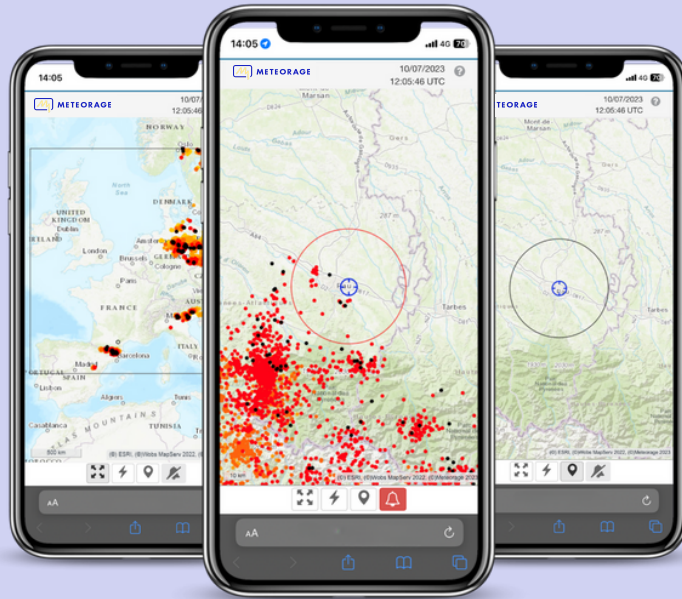


In a stormy world, wherever teams work & assets are, GEOFLASH a new solution for wind energy

PRESS RELEASE

Wind
EUROPE

ANNUAL EVENT
2024
BILBAO
20-22 MARCH



Bilbao, Spain, March 20th, 2024

METEORAGE, leader of lightning detection and mitigation in Europe, launches Geoflash, a solution that improves safety of workers in the field for industries sensitive to lightning and storms, such as wind power, renewable energies or utilities.

Geoflash combines the flexibility of a service available on cell phones without the need to install tools or Apps and accurate lightning information that allows people working at height, on TWG, with or without visibility, on any enclosed installation, to:

- Be alerted when a storm is approaching their worksite, and when it goes away to resume & adapt their activities in complete safety,
- Monitor independently whether a storm is threatening them.

By far one of the biggest environmental risks posed to the wind farm industry is electrical storms. Although the majority of wind farm operators are taking the risk of thunderstorms into account and increasingly using warning systems in combination with lightning protection systems, the operational benefits of having a reliable thunderstorm warning system, such as Geoflash, available to on-site workers, can reduce the risks to safety on WTG.

Being able to anticipate the storm is a real advantage for optimizing daily operations, improving preparedness and resilience against lightning and thunderstorms, and enhance safety and efficiency.

GEOFLASH STRONG BENEFITS:



- Battery saver,
- Easy-to-use with no App or tools to install (Webapp),
- No constant tracking & geolocalization, with integrity of your data (GDPR),
- High-resolution data from METEORAGE network,
- 24-hour service guaranteed by our METEORAGE team,
- Compliance with international standards:
IEC 62793 (Thunderstorm Warning Systems) & 61400-24 (Wind Energy).

We also offer a range of solutions for proactive tailored management of all the stages in the life of wind farms:



Evaluate lightning risks & adapt LPS

with our statistics and analysis.



Ensure safety & anticipate the risks in time

with our alerts when a storm is approaching and when it goes away.



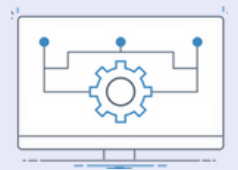
See if wind farms are threatened by storms

with live monitoring of lightning and severe weather.



Reduce inspection time & talk to insurers

thanks to a list of your WTG struck by lightning.



Feed SCADA systems with real time lightning information

from our accurate data and webservice.

ASSESSMENT
REPOWERING

CONSTRUCTION
O&M

WHO WE ARE

Member of



METEORAGE has, over the last 30 years, earned a worldwide reputation for the quality and usefulness of our dedicated lightning data services. Our customers use the information we deliver to better protect both people and property against thunderstorms and lightning. We are a trusted partner for 3,500+ customers in numerous sectors (Wind Energy, Utilities, National meteorological services, Insurance, Defense, etc.).

We detect > 98% of lightning flashes in Europe with a median location accuracy of 100 meters. Outside Europe, we provide the same services using the GLD360 network.

Headquartered in France (Pau), our Corporate social responsibility has been an integral part of our culture and organization for more than 30 years. The driving purpose of METEORAGE, that of saving lives and protecting property by mitigating the risks generated by lightning and storms, is part of our mission as a company serving the community with an ethical approach adopted by each of our 30 employees, who are committed ambassadors.

www.meteorage.com

linkedin.com/company/meteorage

Interested to know more?

Meet METEORAGE
at WindEurope
Booth 3-D110 (Hall 3).

Media contact:
Sabrina Boissinot
sbo@meteorage.com
+33 (0)6 31 98 60 84